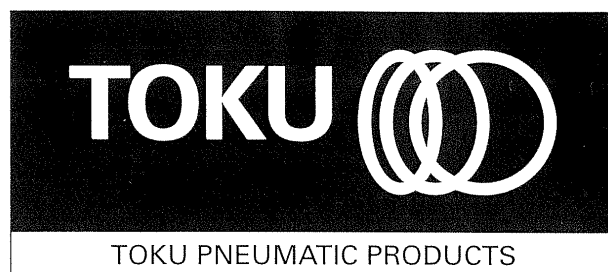


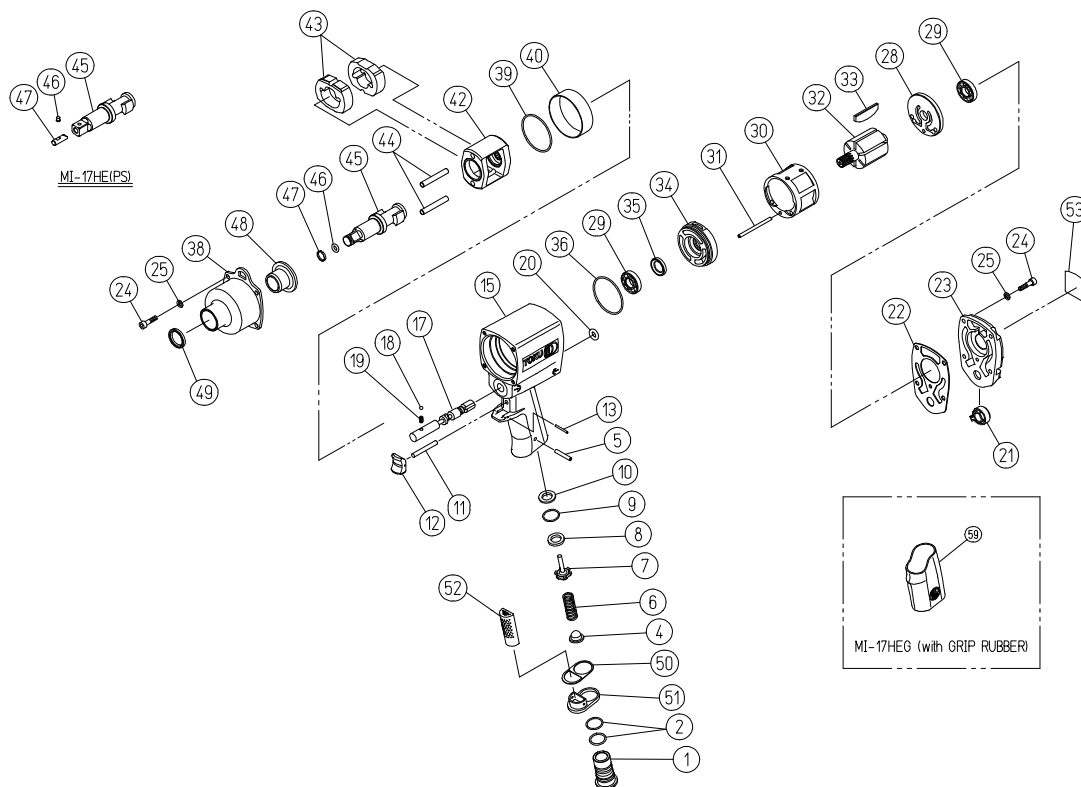
# MAINTENANCE INSTRUCTIONS

## 1/2" IMPACT WRENCH

# MODEL MI-17HE



### Exploded view



### PARTS LIST

### MI-17HE

Symbol No.	Parts No.	Description	Q'ty Req'd
001	43-18-70-850	Air Inlet (PT)	1
002	13-11-03-015	O Ring (S-18)	2
004	13-68-03-049	Air Screen	1
005	13-06-04-025	Spring Pin (4×25)	1
006	13-08-03-181	Throttle Valve Spring	1
007	43-13-94-080	Throttle Valve	1
008	13-68-04-007	Throttle Valve Seat	1
009	13-11-03-015	O Ring (S-18)	1
010	43-18-70-D80	Throttle Valve Spacer	1
011	13-04-03-148	Throttle Push Pin	1
012	13-67-03-071	Trigger	1
013	13-06-02-020	Spring Pin (2×20)	1
015	43-18-70-01B	Motor Housing CP	1
017	43-18-70-210	Reverse Valve	1
018	13-05-02-010	Steel Ball 5/32 (M3.97)	1
019	13-08-03-182	Detent Spring	1
020	13-11-17-203	O Ring (AS568-203)	1
021	13-67-04-005	Regulator Switch	1
022	13-62-02-039	Housing Cover Gasket	1
023	43-18-70-350	Housing Cover	1
024	13-17-05-020	Hex Socket Head Cap Screw M5×20	8
025	13-13-10-005	Spring Washer M5	8
028	43-11-10-370	Rear End Plate	1
029	13-01-20-004	Bearing EE-4	2
030	43-18-70-360	Liner	1
031	13-04-03-123	Liner Pin 3.71×54.76	1
032	43-18-03-390	Rotor	1
033	13-71-10-108	Vane	6
034	43-11-10-380	Front End Plate	1
035	13-12-10-003	Oil Seal (AF-0437HI)	1
036	13-11-17-032	O Ring (AS568-032)	1
038	43-18-70-520	Clutch Housing	1
039	13-11-17-035	O Ring (AS568-035)	1

Symbol No.	Parts No.	Description	Q'ty Req'd
040	13-66-22-001	Housing Adaptor Ring	1
042	43-18-70-440	Hammer Frame	1
043	43-18-01-450	Hammer	2
044	43-18-70-460	Hammer Pin	2
045	43-18-70-500	Anvil Shank	1
046	13-11-05-006	O Ring (6227-6)	1
047	13-08-05-006	Socket Retainer	1
048	43-18-70-490	Shank Bushing	1
049	13-12-02-023	Oil Seal (VB-19.05×25.4×3.2)	1
050	13-62-02-040	Exhaust Deflector Gasket	1
051	13-74-03-021	Exhaust Deflector	1
052	13-74-03-022	Muffler	1
053	13-73-05-138	Name Plate	1
	43-18-70-52C	Clutch Housing CP (Incl. Symbol No.38,48&49)	(1CP)
	43-18-70-50C	Anvil Shank CP(Incl. Symbol No.45,46&47)	(1CP)
<b>MI-17HEL</b>			
045	43-18-71-500	Anvil Shank (L)	1
	43-18-71-50C	Anvil Shank (L) CP(Incl. Symbol No.45,46&47)	(1CP)
<b>MI-17HE(PS)</b>			
045	43-18-74-500	Anvil Shank	1
046	43-18-16-160	Retainer Pin	1
047	13-63-07-001	Retainer Plug	1
	43-18-74-50C	Anvil Shank CP(Incl. Symbol No.45,46&47)	(1CP)
<b>MI-17HEG (with Grip Rubber)</b>			
059	13-66-07-061	Grip Rubber	1
<b>MI-17HELG (with Grip Rubber)</b>			
045	43-18-71-500	Anvil Shank (L)	1
059	13-66-07-061	Grip Rubber	1
	43-18-71-50C	Anvil Shank (L) CP(Incl. Symbol No.45,46&47)	(1CP)
(001)	43-18-70-840	Air Inlet (NPT)	(1)