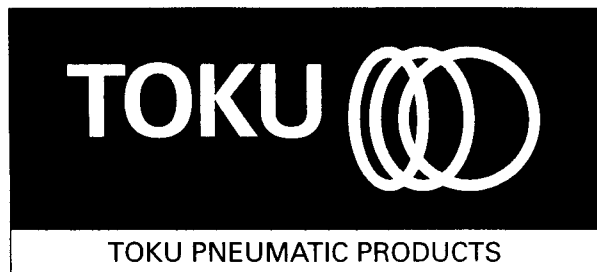
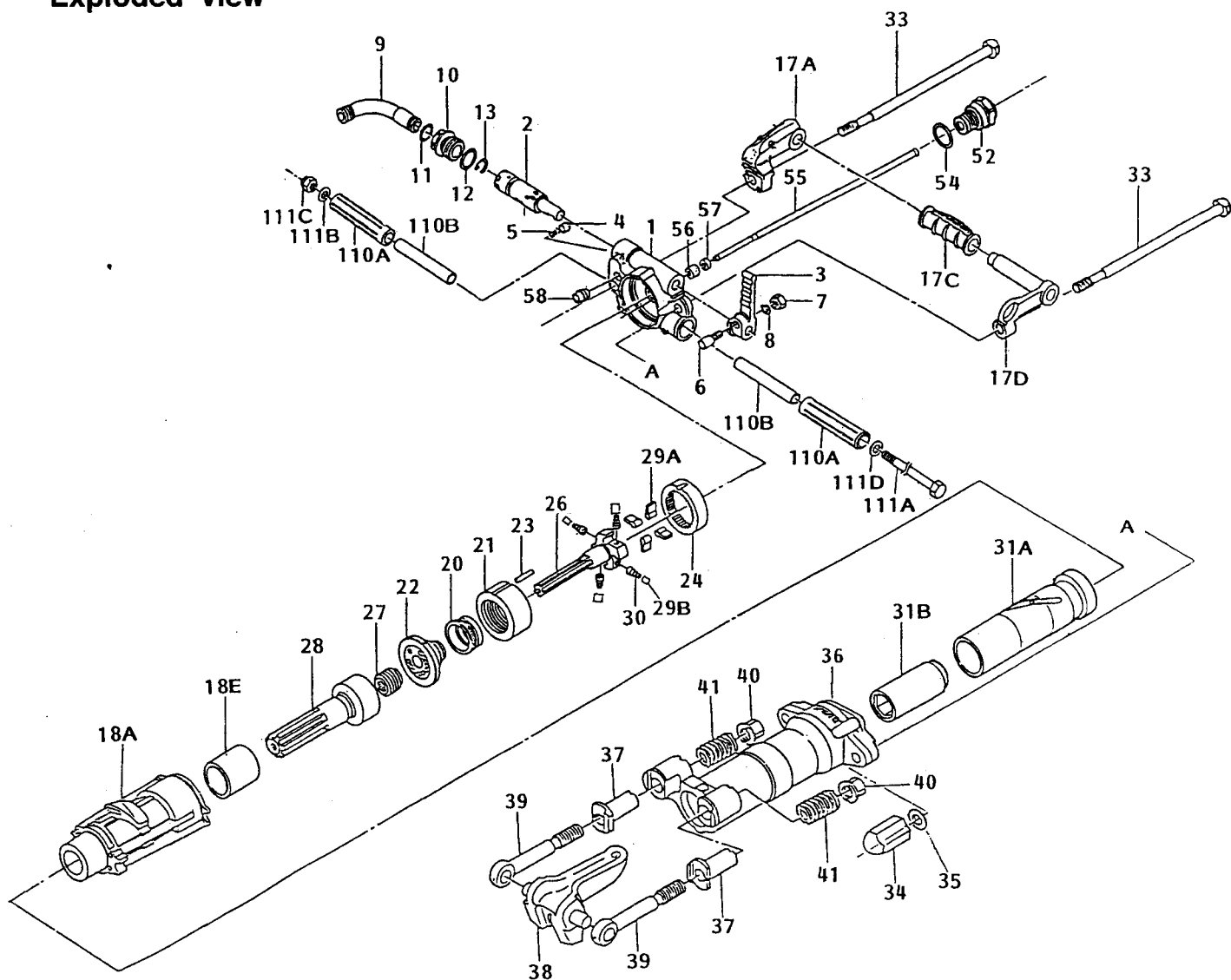


MAINTENANCE INSTRUCTIONS AIR HAND HAMMER MODEL TJ-20



Exploded view



Spare Parts Service Chart

Parts List

Symbol No.	Parts No.	Q'ty Req'd	Description	MUST REPLACE 100%	HIGH WEAR 70%	MEDIUM WEAR 50%	LOW WEAR 30%	NON WEAR 10%	SUBJECT TO EXTERNAL DAMAGE
1	430120A0B	1	Back Head CP					X	
2	430126A41	1	Throttle Valve					X	
3	430126A50	1	Throttle Valve Handle					X	
4	430160A60	1	Throttle Valve Plunger					A	
5	130803011	1	Throttle Valve Spring					A	
6	430101A70	1	Throttle Valve Bolt					A	
7	134401010	1	Hex Nut (M10)					A	
8	131301010	1	Spring Washer (M10)					A	
9	430101B00	1	Air Connection Tube (PT)						X
	430106B10	(1)	Air Connection Tube (NPT)						X
10	430101B31	1	Air Connection Nut					X	
11	131101023	1	O-Ring P-24		X				
12	131101030	1	O-Ring P-30		X				
13	130803004	1	Air Connection Clamp		X				
17	430120B7D	1	Grip Handle Assy (Incl.17A,17C and 17D)			X			
17A	430120C11	(1)	Handle Support (R)					X	
17C	136603005	(1)	Center Grip Handle					X	
17D	430126B7A	(1)	Grip Handle Support CP					X	
18	430120C8F	1	Cylinder CP (Incl. 18A and 18E)					X	
18A	430120C81	(1)	Cylinder					X	
18E	430126D10	(1)	Cylinder Bushing		X				
20	430126F80	1	Valve				X		
21	430126F90	1	Valve Chest					X	
22	430126G20	1	Valve Guide					X	
23	130403011	1	Valve Knock 4.7x53					X	
24	430126G60	1	Ratchet	X					
26	430126H01	1	Rifle Bar				X		
27	430126H10	1	Rifle Nut	X					
28	430126E50	1	Piston (without groove)		X				
	430126E60	(1)	Piston (with groove)		X				
29A	430160H20	4	Rotation Pawl	X					
29B	136303002	4	Pawl Plunger					A	
30	130803006	4	Pawl Plunger Spring	X					
31	430127H6D	1	Rotation Sleeve (L) CP (7/8x4-1/4)					X	
	430126H5C	(1)	Rotation Sleeve (S) CP (7/8x3-1/4)					X	
31A	430127H60	(1)	Rotation Sleeve (L) (7/8x4-1/4)					X	
	430126H50	(1)	Rotation Sleeve (S) (7/8x3-1/4)					X	
31B	430127H80	(1)	Sleeve Bushing (L) (7/8x4-1/4)	X					
	430126H70	(1)	Sleeve Bushing (S) (7/8x3-1/4)	X					
33	131503005	2	Through Bolt					X	
34	430126W10	2	Through Bolt Nut					X	
35	131301014	2	Spring Washer M14					X	
36	430127W70	1	Front Head (L) (7/8x4-1/4)						X
	430126W60	(1)	Front Head (S) (7/8x3-1/4)						X
37	430126W80	2	Front Head Bushing		X				
38	430126K90	1	Steel Holder		X				
39	430126L00	2	Steel Holder Bolt			X			
40	134203004	2	Steel Holder Nut			X			
41	130803010	2	Steel Holder Spring			X			
52	430126J50	1	Blow Tube Grand						X
54	131101027	1	O-Ring P-28		X				
55	430126J40	1	Blow Tube			X			
56	136103020	1	Blow Tube Rubber Packing		X				
57	430126J71	1	Tube Washer				X		
58	136303004	1	Blow Port Connection				A		
110	430301B7A	2	Grip Handle CP (Incl. 110A and 110B)						
110A	136603008	(2)	Grip Handle			X			
110B	430301C50	(2)	Grip Handle Pipe						X
111A	131503006	1	Handle Bolt						X
111B	131307016	1	Plane Washer M16				A		
111C	134501016	1	U Nut M16				A		
111D	430101C40	1	Grip Handle Washer (L)				A		
	430101V0J	1	Line Oiler CP (LO-150N)						X

This service chart is a guide to expectant life of component parts. The replacement levels are based on average tool usage over a one year period.

Example : For 10 tools in use : 10 must - replace items will be required per year, 7 high wear items, etc.

Note : Quantities must be increased if the tool is in more service or continuous usage.

LEGEND

X - Type of wear, if no other comments apply.

A - Easily lost or damaged during disassembly and reassembly.