

Parts for Motor Case

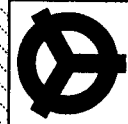
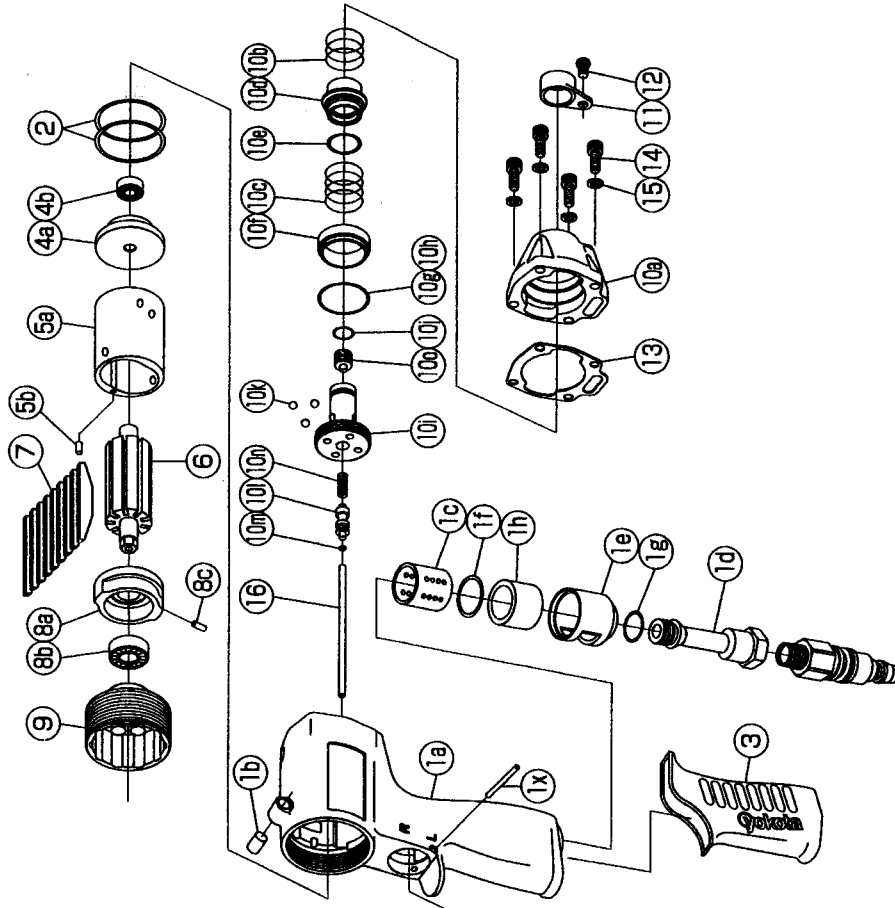
No.	Name of Parts	Per Set	Parts No.
1	Motor Case Assy.	1 set	0169 0011 00 99
	(a) Motor Case	1	*
	(b) Spring Pin (6x10)	1	9250 1082 00 00
	(c) Exhaust Bushing	1	0169 0072 00 00
	(d) Hose Joint	1	0276 0113 00 00
	(e) Exhaust Cover	1	0276 0016 00 00
	(f) O - Ring (N20)	1	9010 4010 00 00
	(g) O - Ring (N15)	1	9010 4008 00 00
	(h) Silencer Sheet	1	0276 0032 00 00
	Throttle Assy.	1 set	0164 0186 00 99
	Throttle Bushing Assy.	1 set	0136 0104 01 99
	(i) Throttle Bushing	1	*
	(j) O - Ring (N15)	1	9010 4008 00 00
	Throttle Rod Bushing Assy.	1 set	0164 0105 00 99
	(k) Throttle Rod Bushing	1	*
	(l) O - Ring (No.3)	1	9010 3021 00 00
	Throttle Rod Assy.	1 set	0164 0105 00 99
	(m) Throttle Rod	1	*
	(n) O - Ring (N3)	1	9010 4051 00 00
	(o) Snap Ring (ETW-2.8)	1	9040 5008 00 00
	(p) Conical Spring (7.2x11.5x8)	1	8020 3064 00 00
	(q) Reverse Valve	1	0164 0005 00 00
	(r) Spring (3x4)	1	8020 1248 00 00
	(s) Ball (1/8)	1	9150 3009 00 00
	(t) Reverse Lever	1	0158 0007 00 00
	(u) Spring Pin (2x12)	1	9250 1015 00 00
	(v) Throttle Knob	1	2024 0153 00 00
	(w) Spring Pin (1.5x14)	1	9250 1005 00 00
	(x) AA Pin (3x21.8)	1	8051 3040 00 00
2	O - Ring (N31.5)	2	9010 4041 00 00
3	Rubber Grip	1	0259 0144 00 00
4	Upper Plate Assy.	1 set	0283 0303 00 99
	(a) Upper Plate	1	0273 0303 00 00
	(b) Ball Bearing (6800ZZCM)	1	9102 2001 00 00
5	Cylinder Assy.	1 set	0188 0304 00 99
	(a) Cylinder	1	*
	(b) Pin (2.5x5)	1	8051 1071 00 00
6	Rotor	1	0169 0305 00 00
7	Vane	9	0286 0308 01 00
8	Lower Plate Assy.	1 set	0286 0307 00 99
	(a) Lower Plate	1	0286 0307 00 00
	(b) Ball Bearing (6900CM)	1	9102 1001 00 00
	(c) Pin (2.5x5)	1	8051 1071 00 00
9	Lower Plate Spacer	1	0169 0311 00 00
10	Motor Case Cover Assy.	1 set	0169 0001 00 99
	(a) Motor Case Cover	1	0169 0001 00 00
	(b) Spring (18.5x11)	1	8020 1297 00 00
	(c) Spring (18.5x13)	1	8020 1298 00 00

The part "*" can not be supplied individually. So please order it as a unit of assembly shown by arrow mark (↑).
 ★ marked parts may be not used, in some case.

IMPULSE WRENCH

MODEL (YES.No.)	TOOL No.
Y-T40A (01)	0169 0000 0101
Y-T40B (01)	0169 0000 0102

Exploded View of Motor Case



YOKOTA EUROPA BV

P.O. BOX 392 NL-1000 A.J. AMSTERDAM. PHONE 020-5318800. FAX 020-5318808
 e-mail: irfgo@impulsetools.com; http://www.impulsetools.com
 Hydraulic Impulse Wrenches, Impact Wrenches, Drills, Grinders, Screw Drivers, Chippers, Sealers, Pumps.



Parts for Liner Case

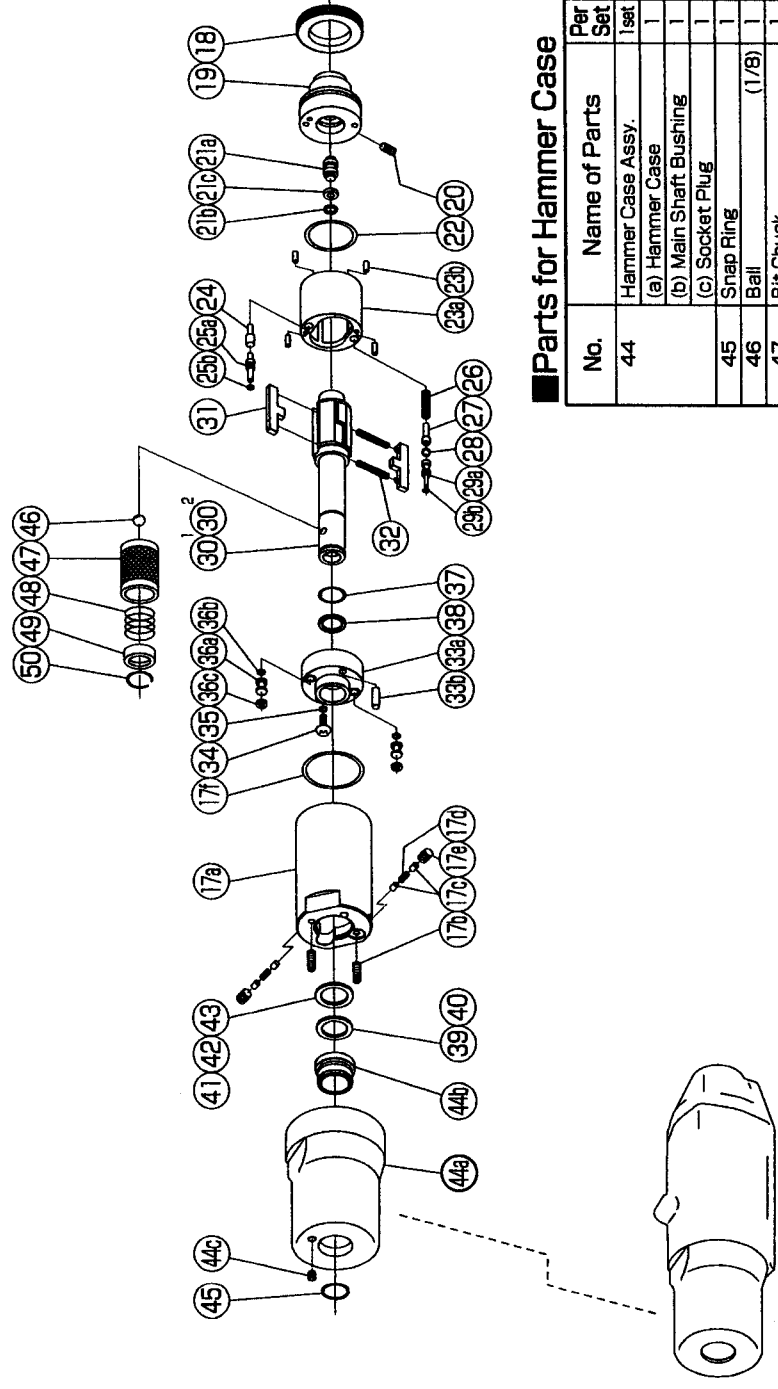
No.	Name of Parts	Per Set	Parts No.
17	Liner Case Assy. 1	1set	0169 0422 00 69
	(a) Liner Case	1	*
	(b) Stopper Screw w/Hex. Hole (M3x8)	2	9480 2024 00 00
	(c) Rubber Plate	4	0081 0047 00 00
	(d) Spring (2.4x6)	2	8020 1267 00 00
	(e) Stopper Screw w/Hex. Hole (M3x3)	2	9480 2028 00 00
	(f) O - Ring (N2.6)	1	9010 4013 00 00
18	Liner Cap	1	0169 0423 00 00
19	Liner Upper Plate	1	0169 0424 00 00
20	Stopper Screw w/Hex. Hole (M3x5)	1	9480 2001 00 00
21	Sensor Assy.	1set	0164 0794 00 99
	(a) Sensor	1	*
	(b) O - Ring (1.75x3x6.5)	1	9010 6027 00 00
	(c) Back-up Ring (3.2x6x1.5)	1	9090 2005 00 00
22	O - Ring (N2.2)	1	9010 4011 00 00
23	Liner Assy.	1set	0169 0425 00 99
	(a) Liner	1	*
	(b) AA Pin (2x5)	4	8051 3091 00 00
24	Relief Valve	1	0088 0245 00 00
25	Push Shaft Assy.	1set	0169 0255 00 99
	(a) Push Shaft	1	*
	(b) O - Ring (0.7x2x3.4)	1	9010 6020 00 00
26	Spring (3.4x8.4)	1	8020 1332 00 00
27	Spring Guide	1	0164 0510 01 00
28	Ball (3/32)	1	9150 3001 00 00
29	Check Valve Assy.	1set	0169 0251 00 99
	(a) Check Valve	1	*
	(b) O - Ring (0.7x2x3.4)	1	9010 6020 00 00
30	Main Shaft Assy. (A-type)	1set	0169 0614 00 51
31	Blade	2	0273 0719 01 00
32	Spring (2.85x1.9)	2	8020 1292 00 00
33	Liner Lower Plate Assy.	1set	0169 0426 00 99
	(a) Liner Lower Plate	1	*
	(b) Spring Pin (3x8)	1	9250 2022 00 00
34	Oil Plug	1	0081 0010 01 00
35	O - Ring (N3)	1	9010 4025 00 00
36	Oil Stop Cap Assy.	2set	0081 0602 00 99
	(a) Oil Stop Cap	1	*
	(b) O - Ring (N2)	1	9010 4001 00 00
	(c) Back-up Ring (N2)	1	9090 2001 00 00
37	O - Ring (JASO1011)	1	9011 3001 00 00
38	Back-up Ring (11x14x0.8)	1	9090 1020 00 00
★39	Washer (11.5x16x0.3)	1	8041 5026 00 00
★40	Washer (11.5x16x0.5)	1	8041 5022 00 00
★41	ST-Packing (11.2x15.5x0.1)	1	8011 1033 00 00
★42	ST-Packing (11.2x15.5x0.2)	1	8011 1034 00 00
★43	ST-Packing (11.2x15.5x0.3)	1	8011 1035 00 00

The part "*" can not be supplied individually.
So please order it as a unit of assembly shown by arrow mark (↑).
☆marked parts; use one of them.

IMPULSE WRENCH

MODEL (YES.No.)	TOOL No.
Y-T40A (01)	0169 0000 0101
Y-T40B (01)	0169 0000 0102

Exploded View of Liner Case and Hammer Case



Parts for Hammer Case

No.	Name of Parts	Per Set	Parts No.
44	Hammer Case Assy.	1set	0169 0401 00 99
	(a) Hammer Case	1	0169 0401 00 00
	(b) Main Shaft Bushing	1	0169 0612 00 00
	(c) Socket Plug	1	8210 7001 00 00
45	Snap Ring	1	9040 2003 00 00
46	Ball (1/8)	1	9150 3009 00 00
47	Bit Chuck	1	2057 0414 00 00
48	Spring (13.5x11.2)	1	8020 1137 00 00
49	Spring Washer	1	2057 0419 00 00
50	Retaining Ring (10x1)	1	8030 1009 00 00
	Parts for Y-T40B		
30*	Main Shaft (B-type)	1set	0169 0614 00 52
	Standard Accessories		
	Swivel Joint	1	9690 0015 00 00
	Hex. Wrench (H1.5x65x65)	1	9610 1012 00 00
	Hex. Wrench (H2x65x65)	1	9610 1013 00 00
	Protector	1	0169 0029 00 00

The part "*" can not be supplied individually.
So please order it as a unit of assembly shown by arrow mark (↑).
016901-P0105



YOKOTA EUROPA BV

P.O. BOX 392 NL-1000 A.J. AMSTERDAM. PHONE 020-5318800. FAX 020-5318806
e-mail: info@impulsetools.com; http://www.impulsetools.com.
Hydraulic Impulse Wrenches, Impact Wrenches, Drills, Grinders, Screw Drivers, Chippers, Sealers, Pumps.