

## Parts for Liner Case

No.	Name of Parts	Per Set	Parts No.
17	Liner Case Assy. 1	1set	0169 0422 00 89
	(a) Liner Case	1	*
	(b) Set Screw (M3x8)	2	9480 2024 00 00
	(c) Rubber Plate	4	0169 0047 00 00
	(d) Spring (2.4x6)	2	8020 1287 00 00
	(e) Set Screw (M3x3)	2	9480 2028 00 00
	(f) O-Ring (N26)	1	9010 4013 00 00
18	Liner Cap	1	0169 0423 00 00
19	Liner Upper Plate	1	0169 0424 00 00
20	Set Screw (M3x5)	1	9480 2001 00 00
21	Sensor Assy.	1set	0164 0794 00 89
	(a) Sensor	1	*
	(b) O-Ring (1.76x3x6.5)	1	9010 8027 00 00
	(c) Back-up Ring (32x6x15)	1	9090 2006 00 00
22	O-Ring (N22)	1	9010 4011 00 00
23	Liner Assy.	1set	0169 0425 01 89
	(a) Liner	1	*
	(b) AA Pin (2x5 41-44HC)	4	8052 3002 00 00
24	Relief Valve	1	0098 0245 00 00
25	Push Shaft Assy.	1set	0169 0256 00 89
	(a) Push Shaft	1	*
	(b) O-Ring (0.7x2x3.4)	1	9010 8020 00 00
26	Spring (3.4x6.4)	1	8020 1332 00 00
27	Spring Guide	1	0164 0510 01 00
28	Ball (3/32)	1	8150 3001 00 00
29	Check Valve Assy	1set	0169 0251 00 89
	(a) Check Valve	1	*
	(b) O-Ring (0.7x2x3.4)	1	9010 8020 00 00
30	Main Shaft Assy. (A-type)	1set	0169 0614 00 51
31	Blade	2	0273 0719 01 00
32	Spring (2.85x19)	2	8020 1282 00 00
33	Liner Lower Plate Assy.	1set	0169 0426 00 89
	(a) Liner Lower Plate	1	*
	(b) Spring Pin (3x8)	1	9250 2022 00 00
34	Oil Plug	1	0081 0010 01 00
35	O-Ring (N3)	1	9010 4026 00 00
36	Oil Stop Cap Assy.	2set	0081 0602 00 89
	(a) Oil Stop Cap	1	*
	(b) O-Ring (N2)	1	9010 4001 00 00
	(c) Back-up Ring (N2)	1	9090 2001 00 00
37	O-Ring (JASO1011)	1	9011 3001 00 00
38	Back-up Ring (11x14x0.8)	1	9090 1020 00 00
*39	Washer (11.5x16x0.3)	1	8041 5026 00 00
*40	Washer (11.5x16x0.5)	1	8041 5026 00 00
*41	ST-Packing (1.2x15.5x0.1)	1	9011 1033 00 00
*42	ST-Packing (1.2x15.5x0.2)	1	9011 1034 00 00
*43	ST-Packing (1.2x15.5x0.3)	1	9011 1035 00 00

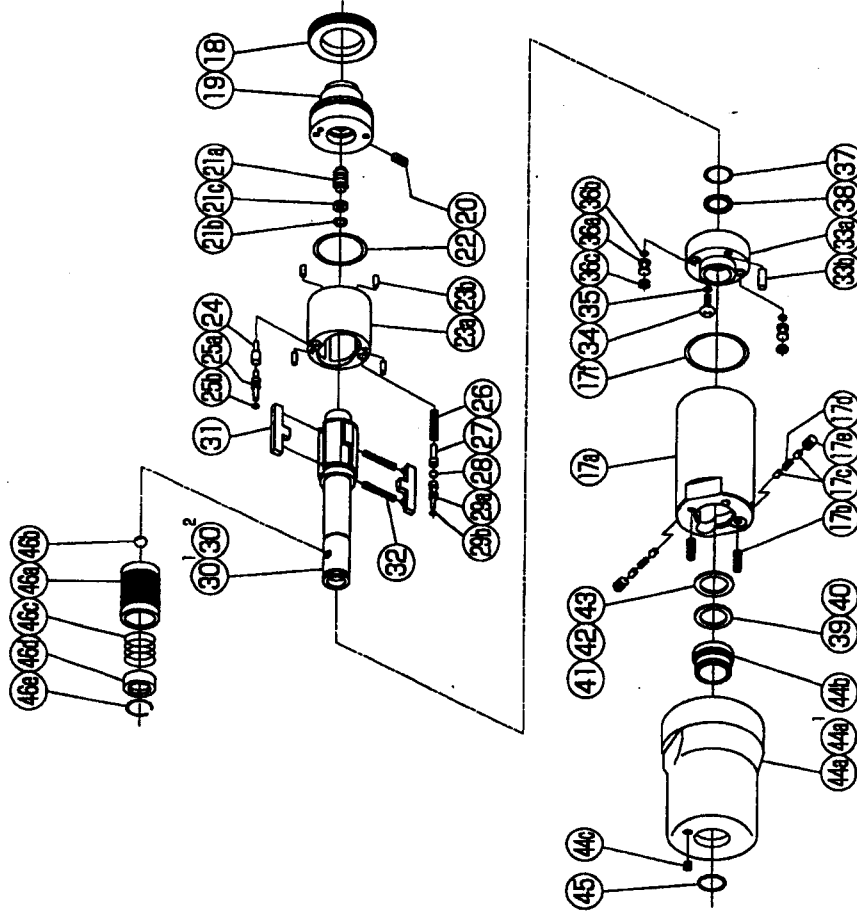
The part "\*" can not be supplied individually.  
So please order it as a unit of assembly shown by arrow mark (↑).

\*marked parts; use one of them.

## IMPULSE WRENCH

MODEL (YES.No.)	TOOL No.
Y-T40A (03)	0169 0000 0301
Y-T40B (03)	0169 0000 0302
Y-T40A-D(03)	0169 0000 0312
Y-T40B-D(03)	0169 0000 0313

## Exploded View of Liner Case and Hammer Case



**Parts for Motor Case**

No.	Name of Parts	Per Set	Parts No.
1	Motor Case Assy.	1set	0169 0011 02 99
	(a) Motor Case	1	*
	(b) Spring Pin (6x10)	1	9250 1082 00 00
	(c) Exhaust Bushing	1	0169 0072 00 00
	Hose Joint Assy.	1set	0276 0113 00 99
	(d) Hose Joint	1	0276 0113 01 00
	(dl) Strainer	1	0269 0111 00 00
	(d2) Washer (7.5x11x2)	1	8042 2008 00 00
	(e) Exhaust Cover	1	0276 0016 00 00
	(f) O-Ring (N20)	1	9010 4010 00 00
	(g) O-Ring (N15)	1	9010 4008 00 00
	(h) Silencer Sheet	1	0276 0032 00 00
	Throttle Assy.	1set	0165 0168 00 99
	Throttle Bushing Assy.	1set	0136 0104 01 99
	(i) Throttle Bushing	1	*
	(j) O-Ring (N15)	1	9010 4008 00 00
	Throttle Rod Bushing Assy.	1set	0166 0105 00 99
	(k) Throttle Rod Bushing	1	*
	(l) O-Ring (No.3)	1	9010 3021 00 00
	Throttle Rod Assy.	1set	0228 0108 01 99
	(m) Throttle Rod	1	*
	(n) O-Ring (N2)	1	9010 4001 00 00
	(o) Snap Ring (ETW-2.6)	1	9040 5008 00 00
	(p) Conical Spring (7.2x11.5x6)	1	9020 3064 00 00
	(q) Reverse Valve	1	0164 0005 00 00
	(r) Spring (3x4)	1	9020 1246 00 00
	(s) Ball (1/8)	1	9150 3009 00 00
	(t) Reverse Lever	1	0169 0007 00 00
	(u) Spring Pin (2x12)	1	9250 1015 00 00
	(v) Throttle Knob	1	9024 0153 00 00
	(w) Spring Pin (1.5x14)	1	9050 1005 00 00
	(x) AA Pin (3x2.6)	1	9051 3040 00 00
	(y) O-Ring (N31.5)	2	9010 4041 00 00
2	Rubber Grip	1	0269 0144 00 00
3	Upper Plate Assy.	1set	0266 0303 00 99
4	(a) Upper Plate	1	0266 0303 00 00
	(b) Ball Bearing (6800ZCM)	1	9102 2001 00 00
5	Cylinder Assy.	1set	0266 0304 02 99
	(a) Cylinder	1	*
	(b) Pin (2.5x5)	1	9051 1071 00 00
6	Rotor	1	0169 0305 00 00
7	Vane	9	0266 0306 01 00
8	Lower Plate Assy.	1set	0266 0307 02 99
	(a) Lower Plate	1	0266 0307 02 00
	(b) Ball Bearing (6800CM)	1	9102 1001 00 00
	(c) Pin (2.5x5)	1	9051 1071 00 00
9	Lower Plate Spacer	1	0169 0311 00 00
10	Motor Case Cover Assy.	1set	0169 0001 00 99
	(a) Motor Case Cover	1	0169 0001 00 00
	(b) Spring (18.5x11)	1	9020 1297 00 00
	(c) Spring (18.5x13)	1	9020 1335 00 00

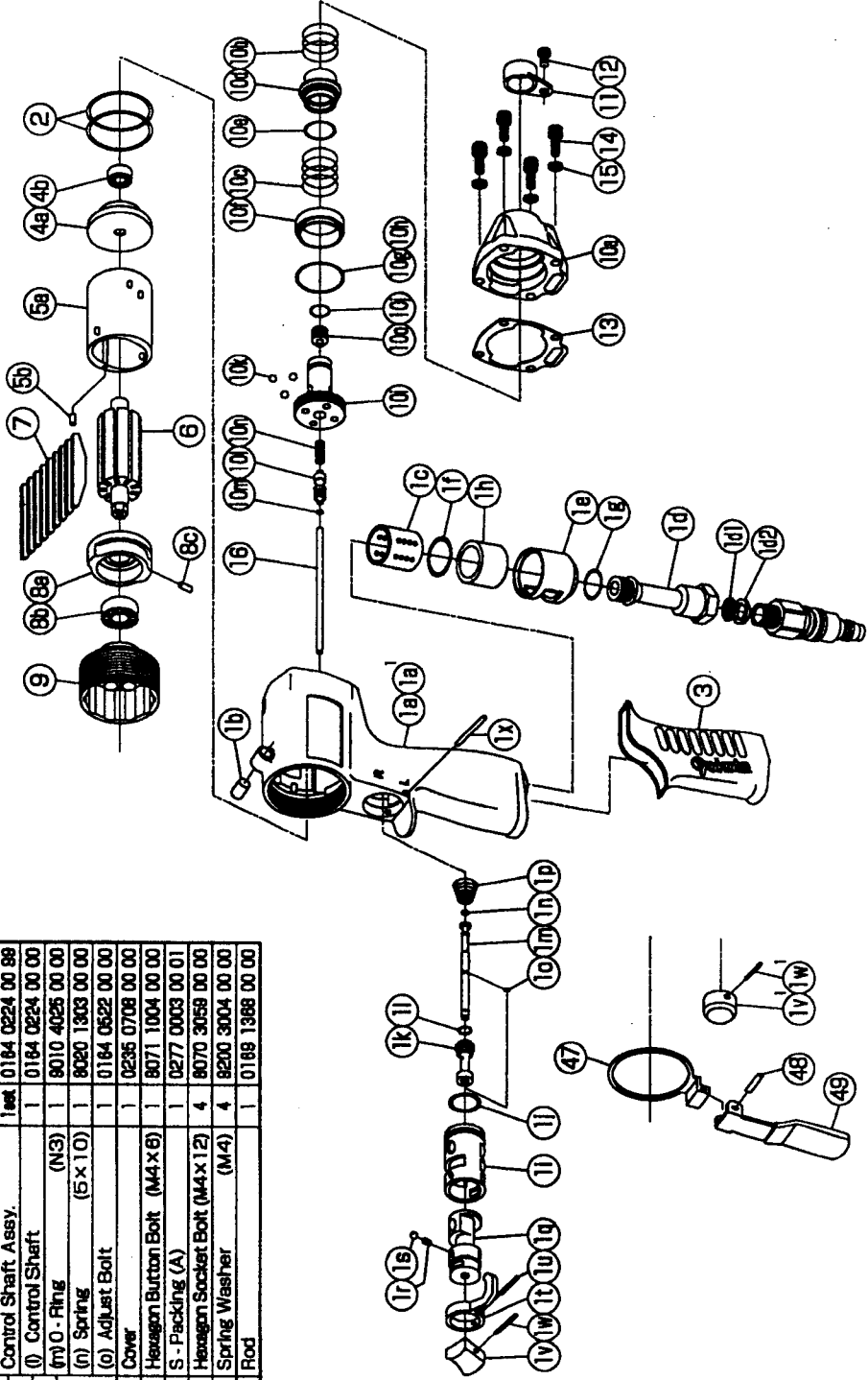
The part "\*" can not be supplied individually. So please order it as a unit of assembly shown by arrow mark (↑).  
★marked parts may be not used, in some case.

No.	Name of Parts	Per Set	Parts No.
	Control Valve Assy.	1set	0164 0241 00 99
	(d) Control Valve	1	0164 0241 00 00
	(e) O-Ring (P16)	1	9010 1015 00 00
	(f) Control Plate	1	0164 0226 00 00
	* (g) ST-Packing (22.2x24.3x0.1)	1	9011 1077 00 00
	* (h) ST-Packing (22.2x24.3x0.2)	1	9011 1078 00 00
	Control Bushing Assy.	1set	0164 0236 00 99
	(i) Control Bushing	1	0164 0236 00 00
	(j) O-Ring (N10)	1	9010 4004 00 00
	(k) Ball (3.5mm)	3	9160 1004 00 00
	Control Shaft Assy.	1set	0164 0224 00 99
	(l) Control Shaft (N3)	1	0164 0224 00 00
	(m) Spring (5x10)	1	9010 4025 00 00
	(n) Adjust Bolt	1	9020 1303 00 00
	(o) Cover	1	0164 0522 00 00
	Hexagon Button Bolt (M4x6)	1	0235 0708 00 00
11	Hexagon Socket Bolt (M4x12)	4	9070 3059 00 00
12	Spring Washer (M4)	4	9200 3004 00 00
13	Rod	1	0189 1388 00 00

**IMPULSE WRENCH**

MODEL (YES.No.)	TOOL No.
Y-T40A (03)	0169 0000 0301
Y-T40B (03)	0169 0000 0302
Y-T40A-D(03)	0169 0000 0312
Y-T40B-D(03)	0169 0000 0313

**Exploded View of Motor Case**



**YOKOTA EUROPA BV**

P.O. BOX 392 NL-1000 AJ AMSTERDAM PHONE 020-5318900 FAX 020-5318908  
E-mail info@impulse-tools.com http://www.impulse-tools.com  
Hydraulic Impulse Wrenches, Drills, Grinders, Screw Drivers, Chisels, Sockets, Pumps.