

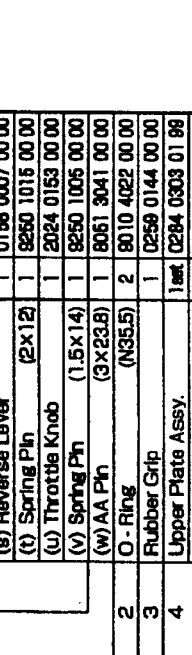
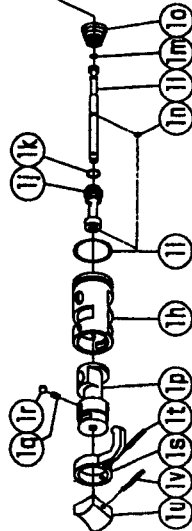
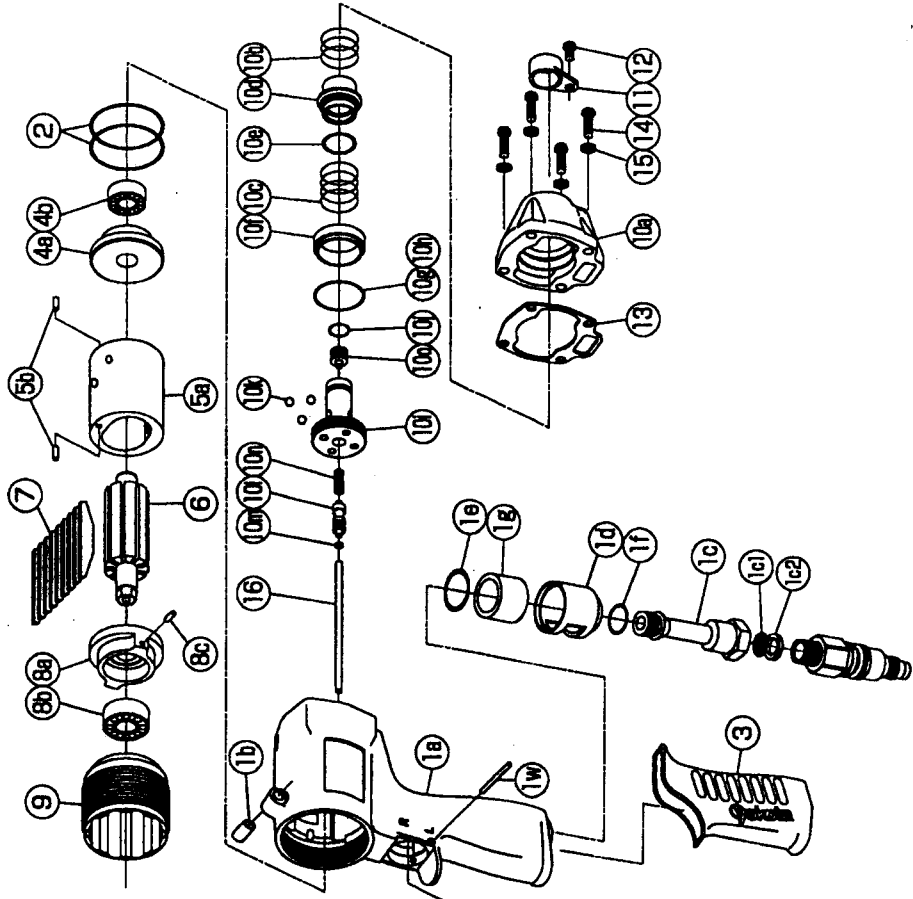
Parts for Motor Case

No.	Name of Parts	Per Set	Parts No.
1	Motor Case Assy.	1set	0164 0011 02 98
	(a) Motor Case	1	*
	(b) Spring Pin (6x10)	1	8250 1082 00 00
	(c) Hose Joint Assy.	1set	0278 0113 00 98
	(d) Hose Joint	1	0278 0119 01 00
	(e) Strainer	1	0259 0111 00 00
	(f) Washer (7.5x11)x2	1	8042 2008 00 00
	(g) Exhaust Cover	1	0278 0018 00 00
	(h) O - Ring (N20)	1	8010 4010 00 00
	(i) O - Ring (N15)	1	8010 4008 00 00
	(j) Silencer Sheet	1	0278 0032 00 00
	Throttle Assy.	1set	0165 0186 00 98
	Throttle Bushing Assy.	1set	0138 0104 01 98
	(k) Throttle Bushing	1	*
	(l) O - Ring (N15)	1	8010 4008 00 00
	Throttle Rod Bushing Assy.	1set	0165 0106 00 98
	(m) Throttle Rod Bushing	1	*
	(n) O - Ring (No.3)	1	8010 3021 00 00
	Throttle Rod Assy.	1set	0228 0106 01 98
	(o) Throttle Rod	1	*
	(p) O - Ring (N2)	1	8010 4001 00 00
	(q) Snap Ring (ETW-2.8)	1	8040 5008 00 00
	(r) Conical Spring (72x11.5x8)	1	8020 3064 00 00
	(s) Reverse Valve	1	0164 0006 00 00
	(t) Spring (3x4)	1	8020 1248 00 00
	(u) Ball (1/8)	1	9150 3009 00 00
	(v) Reverse Lever	1	0168 0007 00 00
	(w) Spring Pin (2x12)	1	8250 1016 00 00
	(x) Throttle Knob (1.5x14)	1	2024 0153 00 00
	(y) Spring Pin (3x23.8)	1	8250 1005 00 00
	(z) AA Pin (N35.5)	1	8061 3041 00 00
2	O - Ring (N35.5)	2	8010 4022 00 00
3	Rubber Grip	1	0259 0144 00 00
4	Upper Plate Assy.	1set	0284 0303 01 98
	(a) Upper Plate	1	0284 0303 01 00
5	Ball Bearing (6800ZZDM)	1	9102 2001 00 00
	Cylinder Assy.	1set	0284 0304 01 98
	(a) Cylinder	1	*
6	Pin (2.5x6)	2	8055 1053 00 00
7	Flotor	1	0184 0305 00 00
8	Lower Plate Assy.	1set	0158 0307 01 98
	(a) Lower Plate	1	0158 0307 01 00
	(b) Ball Bearing (6900CM)	1	9102 1001 00 00
	(c) Pin (2.5x6)	1	8055 1053 00 00
9	Lower Plate Spacer	1	0138 0311 00 00
10	Motor Case Cover Assy.	1set	0164 0001 00 98
	(a) Motor Case Cover	1	0164 0001 00 00
	(b) Spring (18.5x11)	1	8020 1287 00 00
	(c) Spring (18.5x13)	1	8020 1335 00 00

IMPULSE WRENCH

MODEL (YES.No.)	TOOL No.
Y-T55 (03)	0164 0000 0300
Y-T55A (03)	0164 0000 0301
Y-T55B (03)	0164 0000 0302
Y-T55E (03)	0164 0000 0309

Exploded View of Motor Case



The part "*" can not be supplied individually. So please order it as a unit of assembly shown by arrow mark (↑).
 *marked parts may be not used, in some case.
 ☆marked parts; use one of them.



YOKOTA EUROPA BV

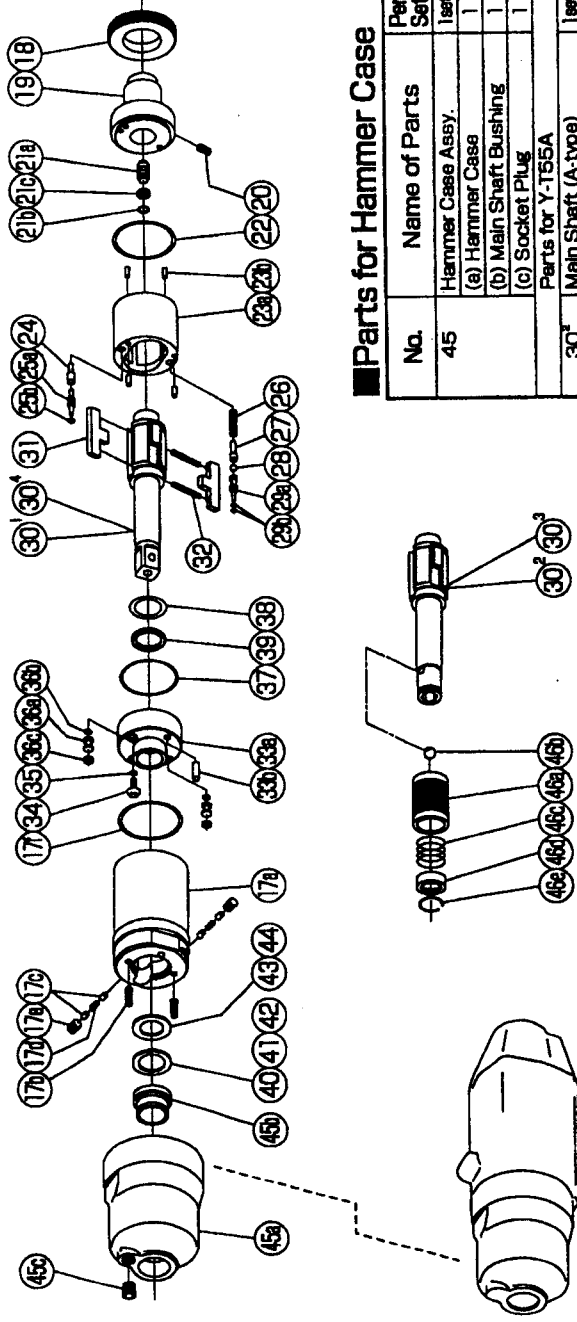
P.O. BOX 392 NL-1000 AJ AMSTERDAM · PHONE 020-6318900 FAX 020-6318909
 e-mail: trip@inputtools.com http://www.inputtools.com
 Hydraulic Hammers, Wrenches, Impact Wrenches, Drills, Grinders, Screw Drivers, Chisels, Sockets, Pumps



IMPULSE WRENCH

MODEL (YES.No.)	TOOL No.
Y-T55 (03)	0164 0000 0300
Y-T55A (03)	0164 0000 0301
Y-T55B (03)	0164 0000 0302
Y-T55E (03)	0164 0000 0309

Exploded View of Liner Case and Hammer Case



Parts for Hammer Case

No.	Name of Parts	Per Set	Parts No.
45	Hammer Case Assy.	1set	0258 0401 00 99
	(a) Hammer Case	1	0258 0401 00 00
	(b) Main Shaft Bushing	1	0259 0612 00 00
	(c) Socket Plug	1	8210 8001 00 00
Parts for Y-T55A			
30*	Main Shaft (A-type)	1set	0159 0814 00 51
Parts for Y-T55B			
30*	Main Shaft (B-type)	1set	0159 0814 00 62
46	Bit Chuck Assy.	1set	2057 0414 00 99
	(a) Bit Chuck	1	2057 0414 00 00
	(b) Ball	(1/8)	8150 3009 00 00
	(c) Spring (13.5x10)	1	8020 1340 00 00
	(d) Spring Washer	1	2331 0419 00 00
	(e) Retaining Ring (10x1)	1	8030 1009 00 00
Parts for Y-T55E			
30*	Main Shaft Assy. (E-type)	1set	0159 0814 00 59
Standard Accessories			
	Swivel Joint	1	9880 0015 00 00
	Hex. Wrench (H1.5x65x65)	1	9610 1012 00 00
	Hex. Wrench (H6732)	1	9610 3008 00 00
	Protector	1	0164 0029 00 00

The part "*" can not be supplied individually.
So please order it as a unit of assembly shown by arrow mark (↑).

016403-PO302

YOKOTA EUROPA BV
 P.O. BOX 392 NL-1000 AJ AMSTERDAM PHONE 020-5318800 FAX 020-5318808
 e-mail: info@impulstools.com http://www.impulstools.com
 Hydraulic Impulse Wrenches, Impact Wrenches, Drills, Grinders, Screw Drivers, Drivers, Sockets, Drivers

Parts for Liner Case

No.	Name of Parts	Per Set	Parts No.
17	Liner Case (A) Assy.	1set	0184 0422 00 98
	(a) Liner Case	1	*
	(b) Set Screw (M3 x 6)	2	9490 2024 00 00
	(c) Rubber Plate (3 x 5)	4	0258 0047 00 00
	(d) Spring (M4 x 4)	2	8020 1288 00 00
	(e) Set Screw (M4 x 4)	2	9490 2031 00 00
	(f) O - Ring (N30)	1	8010 4018 00 00
18	Liner Cap	1	0081 0423 01 00
19	Liner Upper Plate	1	0164 0424 00 00
20	Set Screw (M3 x 5)	1	9490 2001 00 00
21	Sensor Assy.	1set	0184 0784 00 98
	(a) Sensor	1	*
	(b) O - Ring (1.75x3x6.5)	1	9010 6027 00 00
	(c) Back-up Ring (3.2x6x1.5)	1	9090 2005 00 00
	(d) O - Ring (1.5x28.5x29.5)	1	9010 6023 00 00
22	Liner Assy.	1set	0184 0425 01 98
	(a) Liner	1	*
	(b) AA Pin (2x5 41--44HRC)	4	8062 3002 00 00
	Relief Valve	1	0088 0245 00 00
24	Spring Guide (B) Assy.	1set	0088 0610 00 98
	(a) Spring Guide (B)	1	*
	(b) O - Ring (0.7x2x3.4)	1	9010 6020 00 00
26	Spring Guide	1	8020 1330 00 00
27	Ball	1	0184 0510 01 00
28	Check Valve Assy. (3/32)	1	9150 3001 00 00
29	Check Valve	1set	0184 0251 01 98
	(a) Check Valve	1	*
	(b) O - Ring (0.7x2x3.4)	2	9010 6020 00 00
30*	Main Shaft	1	0159 0814 00 01
31	Blade	2	0088 0719 03 00
32	Spring (3.1 x 20)	2	8020 1286 00 00
33	Liner Lower Plate Assy.	1set	0184 0428 00 98
	(a) Liner Lower Plate	1	*
	(b) Spring Pin (3 x 6)	1	9250 2022 00 00
34	Oil Plug	1	0081 0010 01 00
35	O - Ring (N3)	1	9010 4025 00 00
36	Oil Stop Cap Assy.	2set	0081 0602 00 98
	(a) Oil Stop Cap	1	*
	(b) O - Ring (N2)	1	9010 4001 00 00
	(c) Back-up Ring (N2)	1	8080 2001 00 00
37	O - Ring (1 x 26.2 x 27.2)	1	9010 6012 00 00
38	O - Ring (P12)	1	9011 0001 00 00
39	Back-up Ring (12x18x1)	1	9090 5001 00 00
*40	Washer (12.5x18x0.3)	1	8041 5034 00 00
*41	Washer (12.5x18x0.5)	1	8041 5011 00 00
*42	Washer (12.5x18x1)	1	8041 5021 00 00
*43	ST-Packing (12.5x18x0.2)	1	8011 1011 00 00
*44	ST-Packing (12.5x18x0.3)	1	8011 1012 00 00

The part "*" can not be supplied individually.
So please order it as a unit of assembly shown by arrow mark (↑).

*marked parts; use one of them.