

Parts for Motor Case

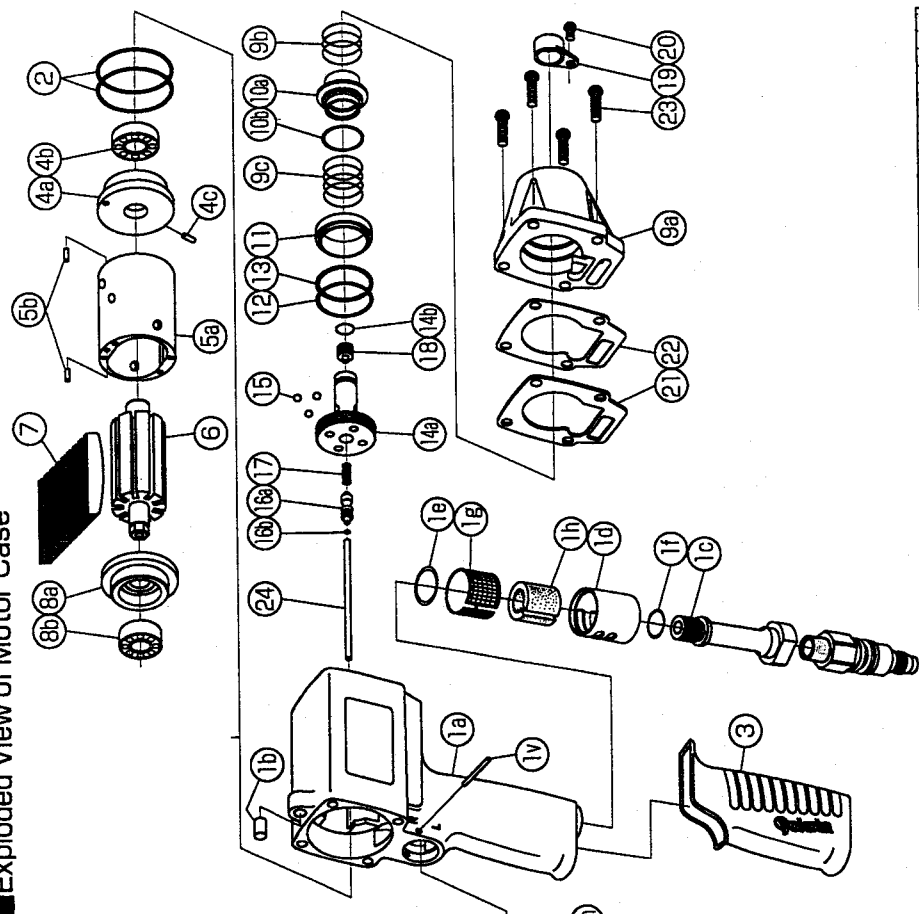
No.	Name of Parts	Per Set	Parts No.
1	Motor Case Assy.	1set	0166 0011 00 99
	(a) Motor Case	1	0166 0011 00 00
	(b) Spring Pin (6x10)	1	9250 1082 00 00
	(c) Hose Joint	1	0141 0113 00 00
	(d) Exhaust Cover	1	0141 0016 00 00
	(e) O - Ring (N20)	1	9010-4010 00 00
	(f) O - Ring (N15)	1	9010 4008 00 00
	(g) Silencer Sheet(A)	1	0141 0032 00 01
	(h) Silencer Sheet(B)	1	0141 0032 00 02
	Throttle Bushing Assy.	1set	0141 0104 01 99
	(i) Throttle Bushing	1	*
	(j) O - Ring (N15)	1	9010 4008 00 00
	Throttle Rod Assy.	1set	0141 0106 02 99
	(k) Throttle Rod	1	*
	(l) O - Ring (No.3)	1	9010 3021 00 00
	(m) Spring (5.2x4)	1	8020 1284 00 00
	(n) Conical Spring (5x11.5x12)	1	8020 3061 00 00
	(o) Reverse Valve	1	0166 0005 00 00
	(p) Spring (3x4)	1	8020 1246 00 00
	(q) Ball (1/8)	1	9150 3009 00 00
	(r) Reverse Lever	1	2315 0007 00 00
	(s) Spring Pin (2x12)	1	9250 1015 00 00
	(t) Throttle Knob	1	0094 0153 00 00
	(u) Spring Pin (1.5x14)	1	9250 1005 00 00
	(v) AA Pin (3x23.8)	1	8051 3041 00 00
2	O - Ring (N40)	2	9010 4017 00 00
3	Rubber Grip	1	0141 0144 00 00
4	Upper Plate Assy.	1set	0266 0303 00 99
	(a) Upper Plate	1	0135 0307 01 99
	(b) Ball Bearing (6901ZZ)	1	9100 5026 00 00
	(c) AA Pin (2x6.8)	1	8051 3017 00 00
5	Cylinder Assy.	1set	0135 0304 00 99
	(a) Cylinder	1	*
	(b) Pin (2.5x6)	2	8055 1053 00 00
6	Rotor	1	0166 0305 00 00
7	Vane	9	0135 0306 00 00
8	Lower Plate Assy.	1set	0135 0307 01 99
	(a) Lower Plate	1	0135 0307 01 00
	(b) Ball Bearing (6900)	1	9100 1046 00 00
9	Motor Case Cover Assy.	1set	0166 0001 00 99
	(a) Motor Case Cover	1	0166 0001 00 00
	(b) Spring (20.5x12)	1	8020 1282 00 00
	(c) Spring (20.5x15)	1	8020 1261 00 00
10	Control Valve Assy.	1set	0166 0241 00 99
	(a) Control Valve	1	0166 0241 00 00
	(b) O - Ring (P22)	1	9010 1019 00 00
11	Control Plate	1	0166 0226 00 00

The part "*" can not be supplied individually. So please order it as a unit of assembly shown by arrow mark (1).

IMPULSE WRENCH

MODEL (YES.No.)	TOOL No.
Y-T70E (00)	0166 0000 0009

Exploded View of Motor Case



YOKOTA EUROPA BV

P.O. BOX 352 NL-1000 AJ AMSTERDAM PHONE 020-5318609 FAX 020-5318908
Hydraulic Impulse Wrenches, Impact Wrenches, Drill, Sander, Screw Driver, Chippers, Saws, Pumps

Parts for Liner Case

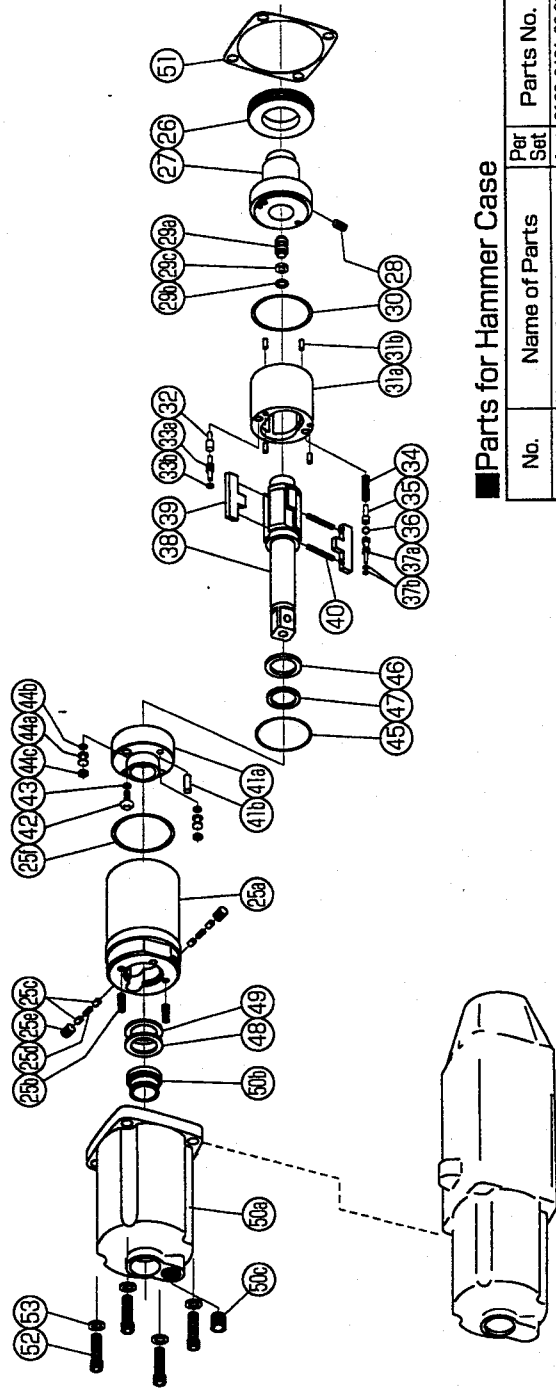
No.	Name of Parts	Per Set	Parts No.
25	Liner Case (A) Assy.	1set	0166 0422 00 98
	(a) Liner Case	1	*
	(b) Screw (M3 x 6)	2	9480 2024 00 00
	(c) Rubber Plate (3 x 5)	4	0259 0047 00 00
	(d) Spring (M4 x 4)	2	8020 1288 00 00
	(e) Screw (M3 x 2)	2	9480 2031 00 00
	(f) O - Ring (N32)	1	9010 4014 00 00
26	Liner Cap	1	0086 0423 00 00
27	Liner Upper Plate	1	0166 0424 00 00
28	Screw (M3 x 5)	1	9480 2001 00 00
29	Sensor Assy.	1set	0164 0794 00 99
	(a) Sensor	1	0164 0794 00 00
	(b) O - Ring (1.75x3x6.5)	1	9010 6027 00 00
	(c) Back-up Ring (3.2x6x1.5)	1	9090 2005 00 00
30	O - Ring (1.3x28.7x31.3)	1	9010 6010 00 00
31	Liner Assy.	1set	0166 0425 00 99
	(a) Liner	1	*
	(b) Pin (2.5x6)	4	8051 1072 00 00
32	Relief Valve	1	0086 0245 00 00
33	Spring Guide(B) Assy.	1set	0135 0510 00 99
	(a) Spring Guide(B)	1	0135 0510 00 02
	(b) O - Ring (0.7x2x3.4)	1	9010 6020 00 00
34	Spring (3.4 x 15)	1	8020 1321 00 00
35	Spring Guide	1	0166 0510 00 00
36	Ball (3mm)	1	9150 1003 00 00
37	Check Valve Assy.	1set	0164 0251 00 99
	(a) Check Valve	1	0164 0251 00 00
	(b) O - Ring (0.7x2x3.4)	2	9010 6020 00 00
38	Main Shaft Assy.	1	0281 0614 00 59
39	Blade	2	0086 0719 03 00
40	Spring (3.4x22.7)	2	8020 1253 00 00
41	Liner Lower Plate Assy.	1set	0166 0426 00 99
	(a) Liner Lower Plate	1	*
	(b) Spring Pin (3x8)	1	9250 2022 00 00
42	Oil Plug	1	0081 0010 00 00
43	O - Ring (N3)	1	9010 4025 00 00
44	Oil Stop Cap Assy.	2set	0081 0602 00 99
	(a) Oil Stop Cap	1	*
	(b) O - Ring (N2)	1	9010 4001 00 00
	(c) Back-up Ring (N2)	1	9090 2001 00 00
45	O - Ring (1 x 29.2 x 31.2)	1	9010 6022 00 00
46	X - Ring (2.25x2.4x12.5)	1	9910 0001 00 00
47	Back-up Ring (12x16x1)	1	9090 5001 00 00
48	Washer (12.5x18x0.5)	1	8041 5011 00 00
49	Washer (12.5x18x1)	1	8041 5021 00 00

The part "*" can not be supplied individually.
So please order it as a unit of assembly shown by arrow mark (↑).

IMPULSE WRENCH

MODEL (YES.Ng.)	TOOL No.
Y-T70E (00)	0166 0000 0009

Exploded View of Liner Case and Hammer Case



Parts for Hammer Case

No.	Name of Parts	Per Set	Parts No.
50	Hammer Case Assy.	1set	0166 0401 00 99
	(a) Hammer Case	1	0166 0401 00 00
	(b) Main Shaft Bushing	1	0081 0612 00 00
	(c) Socket Plug	1	8210 5001 00 00
51	S-Packing(B)	1	0135 0003 00 02
52	Screw (M5 x 18)	4	8070 3052 00 00
53	Spring Washer (M5)	4	9200 3005 00 00
	Standard Accessories		
	Universal Air Joint	1	9590 0015 00 00
	Hex. Wrench (H1.5x65x65)	1	9610 1012 00 00
	Hex. Wrench (H5)	1	9610 1005 00 00
	Protector	1	0166 0029 00 00

The part "*" can not be supplied individually.
So please order it as a unit of assembly shown by arrow mark (↑).

YOKOTA EUROPA BV

P.O. BOX 392 NL-1000 A.J. AMSTERDAM PHONE 020-5318900 FAX 020-5318908
Hydraulic Impulse Wrenches, Impact Wrenches, Drills, Grinders, Saws, Drivers, Chippers, Sealers, Pumps

