

Parts for Motor Case

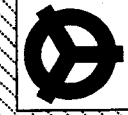
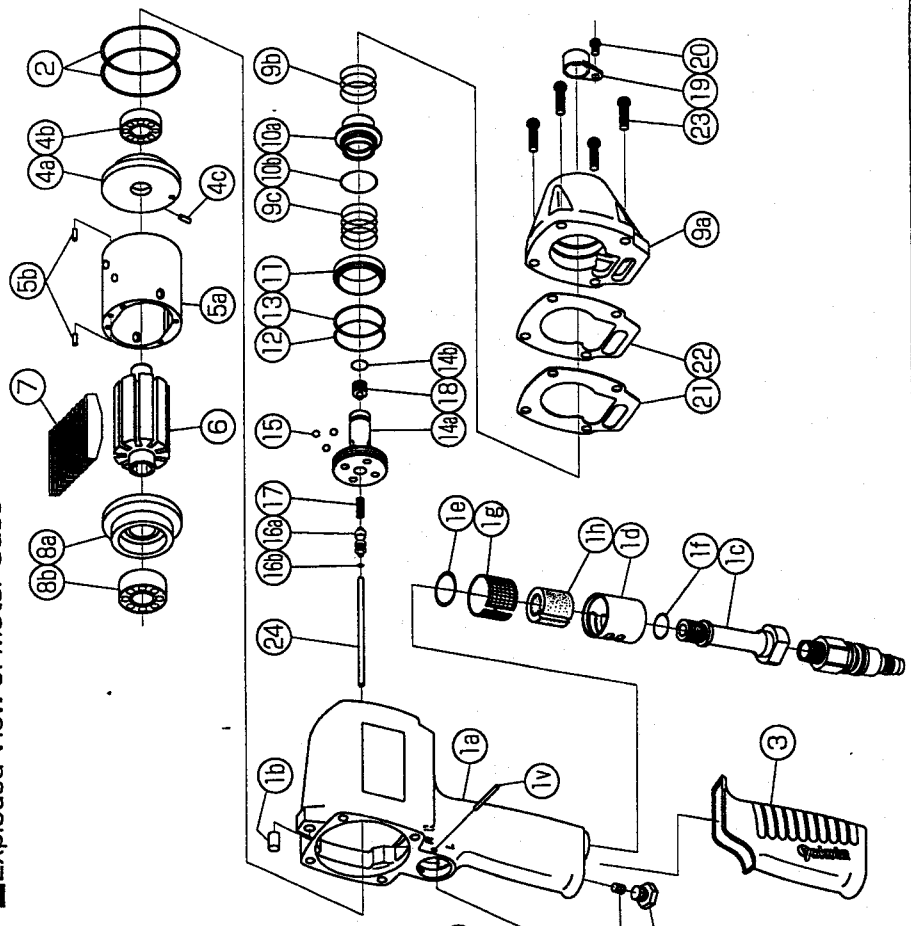
No.	Name of Parts	Per Set	Parts No.
1	Motor Case Assy.	1set	0167 0011 00 99
	(a) Motor Case	1	0167 0011 00 00
	(b) Spring Pin (6x10)	1	9250 1082 00 00
	(c) Hose Joint	1	0141 0113 00 00
	(d) Exhaust Cover	1	0141 0016 00 00
	(e) O - Ring (N20)	1	9010 4010 00 00
	(f) O - Ring (N15)	1	9010 4008 00 00
	(g) Silencer Sheet(A)	1	0141 0032 00 01
	(h) Silencer Sheet(B)	1	0141 0032 00 02
	Throttle Bushing Assy.	1set	0141 0104 01 99
	(i) Throttle Bushing	1	*
	(j) O - Ring (N15)	1	9010 4008 00 00
	Throttle Rod Assy.	1set	0141 0106 02 99
	(k) Throttle Rod	1	*
	(l) O - Ring (No.3)	1	9010 3021 00 00
	(m) Spring (6.2x4)	1	8020 1284 00 00
	(n) Conical Spring (5x11.5x12)	1	8020 3061 00 00
	(o) Reverse Valve	1	0166 0005 00 00
	(p) Spring (3x4)	1	8020 1246 00 00
	(q) Ball (1/8)	1	9150 3009 00 00
	(r) Reverse Lever	1	2315 0007 00 00
	(s) Spring Pin (2x12)	1	9250 1016 00 00
	(t) Throttle Knob	1	0094 0163 00 00
	(u) Spring Pin (1.5x14)	1	9250 1008 00 00
	(v) AA Pin (3x23.8)	1	8051 3041 00 00
	(w) Screw (M5x5)	1	9480 2016 00 00
	(x) Hex. Oil Plug	1	8230 2002 00 00
2	O - Ring (N46)	2	9010 4032 00 00
3	Rubber Grip	1	0141 0144 00 00
4	Upper Plate Assy.	1set	0147 0303 00 99
	(a) Upper Plate	1	0147 0303 00 00
	(b) Ball Bearing (6901ZZ)	1	9100 5026 00 00
	(c) AA Pin (2x6.8)	1	8051 3017 00 00
5	Cylinder Assy.	1set	0141 0304 01 99
	(a) Cylinder	1	*
	(b) Pin (2.5x6)	2	8055 1053 00 00
6	Rotor	1	0167 0305 00 00
7	Vane	9	0141 0306 01 00
8	Lower Plate Assy.	1set	0141 0307 01 99
	(a) Lower Plate	1	0141 0307 01 00
	(b) Ball Bearing (6902)	1	9100 1036 00 00
9	Motor Case Cover Assy.	1set	0167 0001 00 99
	(a) Motor Case Cover	1	0167 0001 00 00
	(b) Spring (20.5x12)	1	8020 1262 00 00
	(c) Spring (20.5x15)	1	8020 1261 00 00
	Control Valve Assy.	1set	0166 0241 00 99
	(a) Control Valve	1	0166 0241 00 00
	(b) O - Ring (P22)	1	9010 1019 00 00

The part "*" can not be supplied individually. So please order it as a unit of assembly shown by arrow mark (1).

IMPULSE WRENCH

MODEL (YES.No.)	TOOL No.
Y-T90E (00)	0167 0000 0009

Exploded View of Motor Case



YOKOTA EUROPA BV

P.O. BOX 292 NL-1000 AJ AMSTERDAM, PHONE 020-5318900, FAX 020-5318808
Hydraulic Impulse Wrenches, Impact Wrenches, Drills, Grinders, Screw Drivers, Chippers, Saws, Pumps

016700-P8907

Parts for Liner Case

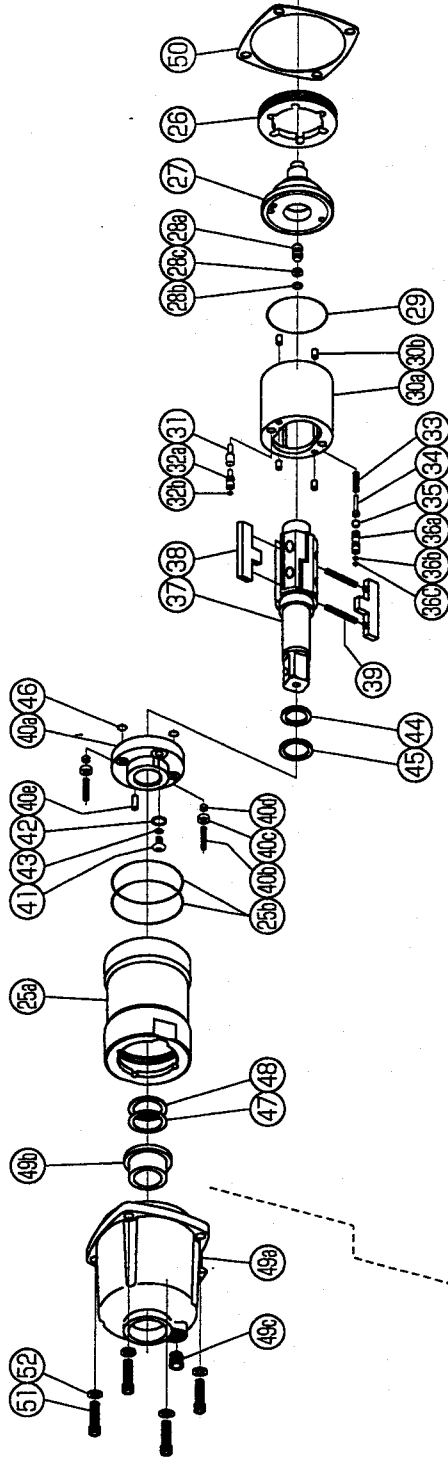
No.	Name of Parts	Per Set	Parts No.
25	Liner Case Assy.	1set	0167 0422 00 99
	(a) Liner Case	1	*
	(b) O - Ring (N42)	2	9010 4018 00 00
26	Liner Cap	1	0167 0423 00 00
27	Liner Upper Plate	1	0167 0424 00 00
28	Sensor Assy.	1set	0164 0794 00 99
	(a) Sensor	1	0164 0794 00 00
	(b) O - Ring (1.75x3x6.5)	1	9010 6027 00 00
	(c) Back-up Ring (32x6x1.5)	1	9090 2005 00 00
29	O - Ring (N36)	1	9010 4015 00 00
30	Liner Assy.	1set	0167 0425 00 99
	(a) Liner	1	*
	(b) AA-Pin (3x5)	4	8051 3094 00 00
31	Relief Valve	1	0141 0245 00 00
32	Spring Guide(B) Assy.	1set	0077 0510 00 99
	(a) Spring Guide(B)	1	0077 0510 00 02
	(b) O - Ring (N2)	1	9010 4001 00 00
33	Spring (3.6x22.5)	1	8020 1265 00 00
34	Spring Guide	1	0167 0510 00 00
35	Ball (4mm)	1	9150 1005 00 00
36	Check Valve Assy.	1set	0245 0251 00 99
	(a) Check Valve	1	0245 0251 00 00
	(b) O - Ring (N2)	1	9010 4001 00 00
	(c) O - Ring (0.7x2x3.4)	1	9010 6020 00 00
37	Main Shaft Assy.	1	0167 0614 00 99
38	Blade	2	0141 0719 00 00
39	Spring (4x32)	2	8020 1251 00 00
40	Liner Lower Plate Assy.	1set	0167 0426 00 99
	(a) Liner Lower Plate	1	*
	(b) Screw (M3x14)	2	9480 2029 00 00
	(c) Nylon Bushing	2	0260 0431 00 00
	(d) Bushing	2	0260 0728 00 00
	(e) Spring Pin (3x6)	1	9250 2001 00 00
41	Oil Plug (M4)	1	0048 0010 00 00
42	Washer (6.5x8.5x1.1)	1	8040 1073 00 00
43	O - Ring (N4)	1	9010 4021 00 00
44	X - Ring (R16)	1	9910 1001 00 00
45	Back-up Ring (16x20x1.5)	1	9090 1012 00 00
46	O - Ring (N5)	2	9010 4033 00 00
47	Washer (16.5x22x0.3)	1	8041 5038 00 00
48	Washer (16.5x22x0.5)	1	8041 5039 00 00

The part "*" can not be supplied individually.
So please order it as a unit of assembly shown by arrow mark (†).

IMPULSE WRENCH

MODEL (YES.No.)	TOOL No.
Y-T90E (00)	0167 0000 0009

Exploded View of Liner Case and Hammer Case



Parts for Hammer Case

No.	Name of Parts	Per Set	Parts No.
49	Hammer Case Assy.	1set	0141 0401 01 99
	(a) Hammer Case	1	0141 0401 01 00
	(b) Main Shaft Bushing	1	0141 0612 00 00
	(c) Socket Plug	1	8210 5001 00 00
50	S-Packing(E)	1	0141 0003 01 02
51	Screw (M5x18)	4	8070 3052 00 00
52	Spring Washer (M5)	4	9200 3005 00 00
Standard Accessories			
	Universal Air Joint	1	9690 0015 00 00
	Hex. Wrench (H1.5x65x65)	1	9610 1012 00 00
	Hex. Wrench (H15)	1	9610 1006 00 00
	Protector	1	0167 0029 00 00

The part "*" can not be supplied individually.
So please order it as a unit of assembly shown by arrow mark (†).



YOKOTA EUROPA BV

P.O. BOX 392, NL-1009 AJ AMSTERDAM, PHONE 020-5318800, FAX 020-5318806
Hydraulic Impulse Wrenches, Impact Wrenches, Drills, Grinders, Screw Drivers, Saws, Spline Drivers