



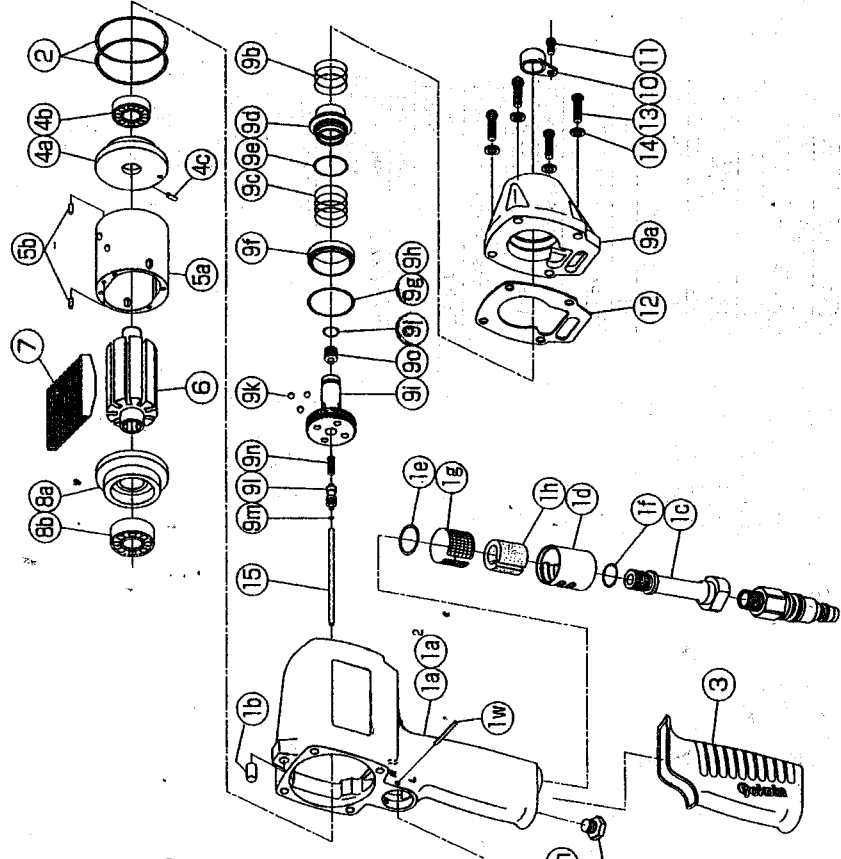
**Parts for Motor Case**

No.	Name of Parts	Per Set	Parts No.
1	Motor Case Assy.	1set	0167 0011 01 99
	(a) Motor Case	1	*
	(b) Spring Pin (6x10)	1	9250 1082 00 00
	(c) Hose Joint	1	0141 0113 00 00
	(d) Exhaust Cover	1	0141 0016 00 00
	(e) O - Ring (N20)	1	9010 4010 00 00
	(f) O - Ring (N15)	1	9010 4008 00 00
	(g) Silencer Sheet(A)	1	0141 0032 00 01
	(h) Silencer Sheet(B)	1	0141 0032 00 02
	Throttle Bushing Assy.	1set	0167 0104 00 99
	(i) Throttle Bushing	1	*
	(j) O - Ring (N16)	1	9010 4009 00 00
	Throttle Rod Bushing Assy.	1set	0167 0105 00 99
	(k) Throttle Rod Bushing	1	*
	(l) O - Ring (P6)	1	9010 1049 00 00
	Throttle Rod Assy.	1set	0167 0106 01 99
	(m) Throttle Rod	1	*
	(n) O - Ring (N3)	1	9010 4051 00 00
	(o) Snap Ring (ETW-2.B)	1	9040 5008 00 00
	(p) Reverse Valve	1	0167 0005 00 00
	(q) Spring (3x4)	1	8020 1246 00 00
	(r) Ball (1/8)	1	9150 3009 00 00
	(s) Reverse Lever	1	2315 0007 00 00
	(t) Spring Pin (2x12)	1	9250 1015 00 00
	(u) Throttle Knob	1	0094 0153 00 00
	(v) Spring Pin (1.5x14)	1	9250 1005 00 00
	(w) AA Pin (3x23.8)	1	8051 3041 00 00
	(x) Hex. Oil Plug (PS1/8x6)	1	8230 2002 00 00
2	O - Ring (N46)	2	9010 4032 00 00
3	Rubber Grip	1	0141 0144 00 00
4	Upper Plate Assy.	1set	0167 0303 00 99
	(a) Upper Plate	1	0167 0303 00 00
	(b) Ball Bearing (6901ZZCM)	1	9102 2002 00 00
	(c) AA Pin (2x6.8)	1	8051 3017 00 00
5	Cylinder Assy.	1set	0141 0304 03 99
	(a) Cylinder	1	*
	(b) Pin (2.5x6)	2	8055 1063 00 00
6	Flotor	1	0167 0305 00 00
7	Vane	9	0141 0306 01 00
8	Lower Plate Assy.	1set	0141 0307 04 99
	(a) Lower Plate	1	0141 0307 03 00
	(b) Ball Bearing (6902CM)	1	9102 1004 00 00
9	Motor Case Cover Assy.	1set	0167 0001 00 99
	(a) Motor Case Cover	1	0167 0001 00 00
	(b) Spring (20.5x12)	1	8020 1262 00 00
	(c) Spring (20.5x15)	1	8020 1261 00 00

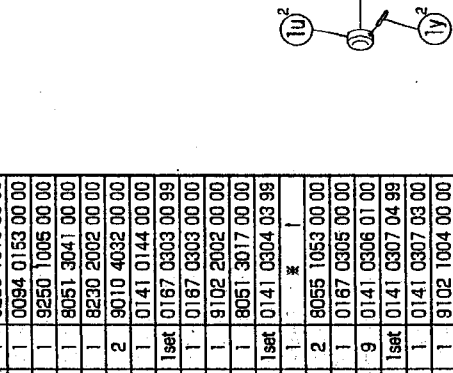
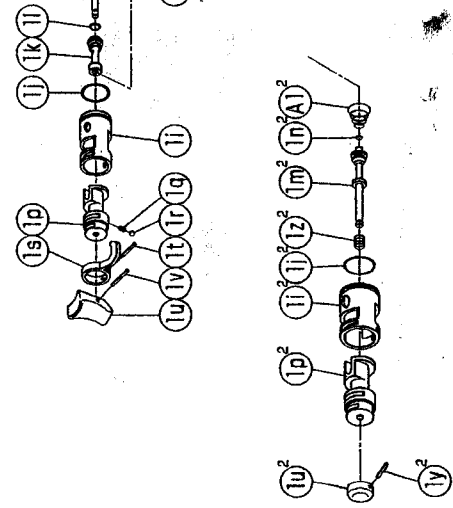
**IMPULSE WRENCH**

MODEL (YES.No.)	TOOL No.
Y-T90 (02)	0167 0000 0200
Y-T90E (02)	0167 0000 0209
Y-T90-D (02)	0167 0000 0206
Y-T90E-D(02)	0167 0000 0214

**Exploded View of Motor Case**



No.	Name of Parts	Per Set	Parts No.
	Control Valve Assy.	1set	0166 0241 00 99
	(d) Control Valve	1	0166 0241 00 00
	(e) O - Ring (P22)	1	9010 1019 00 00
	(f) Control Plate	1	0166 0226 00 00
*	(g) ST-Packing (27.2x29.8x0.1)	1	8011 1079 00 00
*	(h) ST-Packing (27.2x29.8x0.2)	1	8011 1080 00 00
	Control Bushing Assy.	1set	0166 0236 00 99
	(i) Control Bushing	1	0166 0236 00 00
	(j) O - Ring (N10)	1	9010 4004 00 00
	(k) Ball (3.5mm)	3	9150 1004 00 00
	Control Shaft Assy.	1set	0166 0224 00 99
	(l) Control Shaft	1	0166 0224 00 00
	(m) O - Ring (N3)	1	9010 4025 00 00
	(n) Spring (5x12)	1	8020 1320 00 00
	(g) Adjust Bolt	1	0164 0522 00 00
10	Cover	1	0235 0708 00 00
11	Bolt with Hex. Hole (M4x6)	1	8071 1004 00 00
12	S - Packing(A)	1	0167 0003 00 01
13	Bolt with Hex. Hole (M5x18)	4	8070 3052 00 00
14	Spring Washer (M5)	4	9200 3005 00 00
15	Rod	1	0167 1368 00 00



The part "\*" can not be supplied individually. So please order it as a unit of assembly shown by arrow mark (↑).  
 \* marked parts may be not used, in some case.  
 ☆ marked parts; use them.



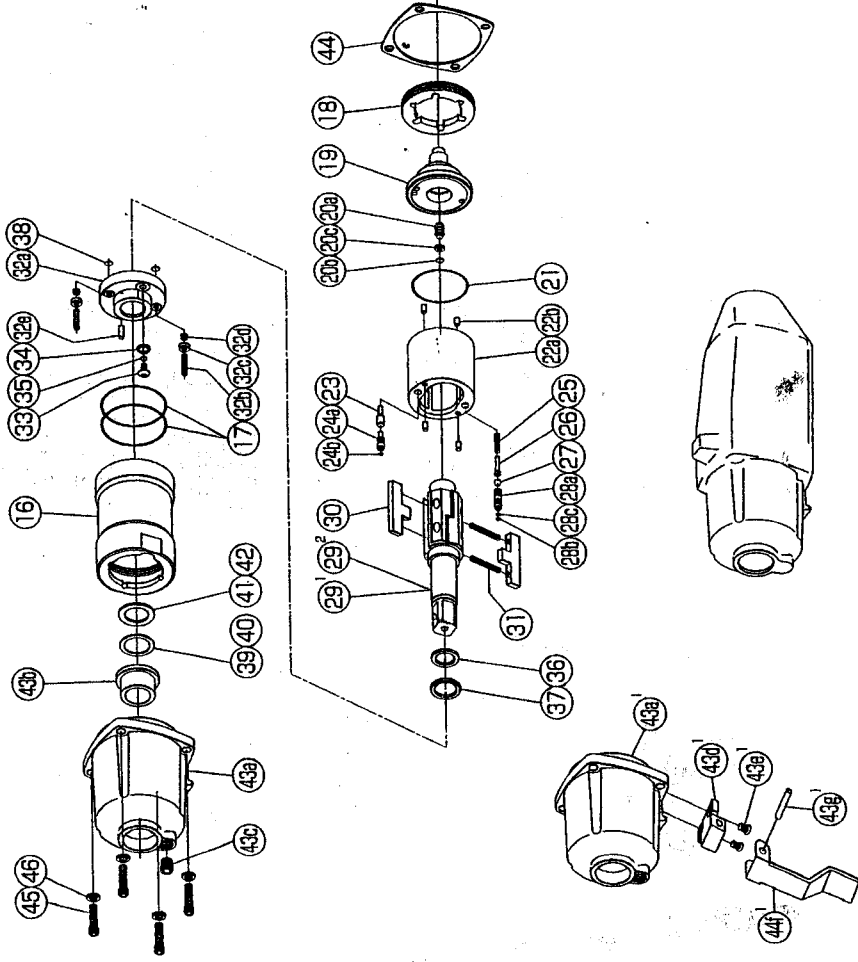
**YOKOTA EUROPA BV**

P.O. BOX 392 NL-1000 AJ AMSTERDAM PHONE 020-5318808 FAX 020-5318808  
 e-mail: info@impulsetools.com; http://www.impulsetools.com  
 Hydraulic, Impact Wrenches, Impact Wrenches, Drill Grinders, Screw Drivers, Chippers, Saws, Pumps.

## IMPULSE WRENCH

MODEL (YES.No.)	TOOL No.
Y-T90 (02)	0167 0000 0200
Y-T90E (02)	0167 0000 0209
Y-T90-D (02)	0167 0000 0206
Y-T90E-D(02)	0167 0000 0214

### Exploded View of Liner Case and Hammer Case



### Parts for Liner Case

No.	Name of Parts	Per Set	Parts No.
16	Liner Case	1	0167 0422 00 00
17	O - Ring (N42)	2	9010 4018 00 00
18	Liner Cap	1	0167 0423 00 00
19	Liner Upper Plate	1	0167 0424 00 00
20	Sensor Assy.	1set	0164 0794 00 99
	(a) Sensor	1	*
	(b) O - Ring (1.75x3x6.5)	1	9010 6027 00 00
	(c) Back-up Ring (32x6x1.5)	1	9090 2005 00 00
21	O - Ring (N36)	1	9010 4015 00 00
22	Liner Assy.	1set	0167 0425 00 99
	(a) Liner	1	*
	(b) AA-Pin (3x5)	4	8051 3094 00 00
23	Relief Valve	1	0141 0245 00 00
24	Spring Guide(B) Assy.	1set	0077 0510 00 99
	(a) Spring Guide(B)	1	*
	(b) O - Ring (3.9x1.6)	1	9010 4001 00 00
25	Spring	1	8020 1322 00 00
26	Spring Guide	1	0167 0510 00 00
27	Ball (4mm)	1	9150 1005 00 00
28	Check Valve Assy.	1set	0167 0251 00 99
	(a) Check Valve	1	*
	(b) O - Ring (N2)	1	9010 4001 00 00
	(c) O - Ring (0.7x2x3.4)	1	9010 6020 00 00
29	Main Shaft	1	0167 0614 00 01
30	Blade	2	0141 0719 00 00
31	Spring (4x32)	2	8020 1251 00 00
32	Liner Lower Plate Assy.	1set	0167 0426 00 99
	(a) Liner Lower Plate	1	*
	(b) Screw (M3x1.4)	2	9480 2029 00 00
	(c) Nylon Bushing	2	0260 0431 00 00
	(d) Bushing	2	9250 2001 00 00
	(e) Spring Pin (3x6)	1	9250 1012 00 00
33	Oil Plug (M4)	1	0048 0010 00 00
34	Washer (6.5x8.5x1.1)	1	8040 1073 00 00
35	O - Ring (N4)	1	9010 4021 00 00
36	X - Ring (R16)	1	9910 1001 00 00
37	Back-up Ring (18x20x1.5)	1	9090 1012 00 00
38	O - Ring (N5)	2	9010 4033 00 00
*39	Washer (16.5x22x0.3)	1	8041 5038 00 00
*40	Washer (16.5x22x0.5)	1	8041 5039 00 00
*41	ST-Packing (17.5x21.5x0.2)	1	8011 1062 00 00
*42	ST-Packing (17.5x21.5x0.3)	1	8011 1063 00 00

The part \* can not be supplied individually.

So please order it as a unit of assembly shown by arrow mark (↑)

\*marked parts; use one of them.

### Parts for Hammer Case

No.	Name of Parts	Per Set	Parts No.
43	Hammer Case Assy.	1set	0141 0401 01 99
	(a) Hammer Case	1	0141 0401 01 00
	(b) Main Shaft Bushing	1	0141 0612 00 00
	(c) Socket Plug	1	8210 5001 00 00
44	S-Packing(B)	1	0141 0003 01 02
45	Screw (M5 x 1.8)	4	8070 3052 00 00
46	Spring Washer (M5)	4	9200 3005 00 00
	Parts for Y-T90E		
29 <sup>2</sup>	Main Shaft Assy. (E-type)	1	0167 0614 00 59
	Special Parts for D-version		
1 <sup>2</sup>	Motor Case Assy.	1set	0167 0011 01 84
	Throttle Bushing Assy.	1set	0141 0104 01 99
	(l) Throttle Bushing	1	*
	(i) O - Ring (N16)	1	9010 4009 00 00
	Throttle Rod Assy.	1set	0141 0106 03 99
	(m) Throttle Rod	1	*
	(n) O - Ring (No.3)	1	9010 3021 00 00
	(p) Reverse Valve	1	0166 0005 00 00
	(u) Throttle Knob	1	0281 0153 00 00
	(v) Spring Pin (1.5x1.2)	1	9250 1004 00 00
	(z) Spring (5.2x4)	1	8020 1284 00 00
	(A1) Conical Spring (5x11.5x12)	1	8020 3061 00 00
43	Hammer Case Assy.	1set	0141 0401 00 84
	(a) Hammer Case (A)	1	0141 0401 00 01
	(d) Bleket	1	0281 0023 00 00
	(e) Cross Recessed Head Screw #3x8	2	9440 2002 00 00
	(f) Throttle Lever	1	0281 0110 00 00
	(g) Spring Pin (3x1.8)	1	9250 2016 00 00
	Standard Accessories		
	Swivel Joint	1	9690 0015 00 00
	Hex. Wrench (H1.5x65x65)	1	9610 1012 00 00
	Hex. Wrench (H5)	1	9610 1006 00 00
	Protector	1	0167 0029 00 00

The part \* can not be supplied individually.  
So please order it as a unit of assembly shown by arrow mark (↑)

# YOKOTA EUROPA BV

P.O. BOX 392 NL-1000 AJ AMSTERDAM- PHONE 020-5318900 FAX 020-5319808  
e-mail: info@impulsetools.com http://www.impulsetools.com  
Hydraulic Impulse Wrenches, Impact Wrenches, Drills, Grinders, Screw Drivers, Chippers, Sealers, Pumps.

