

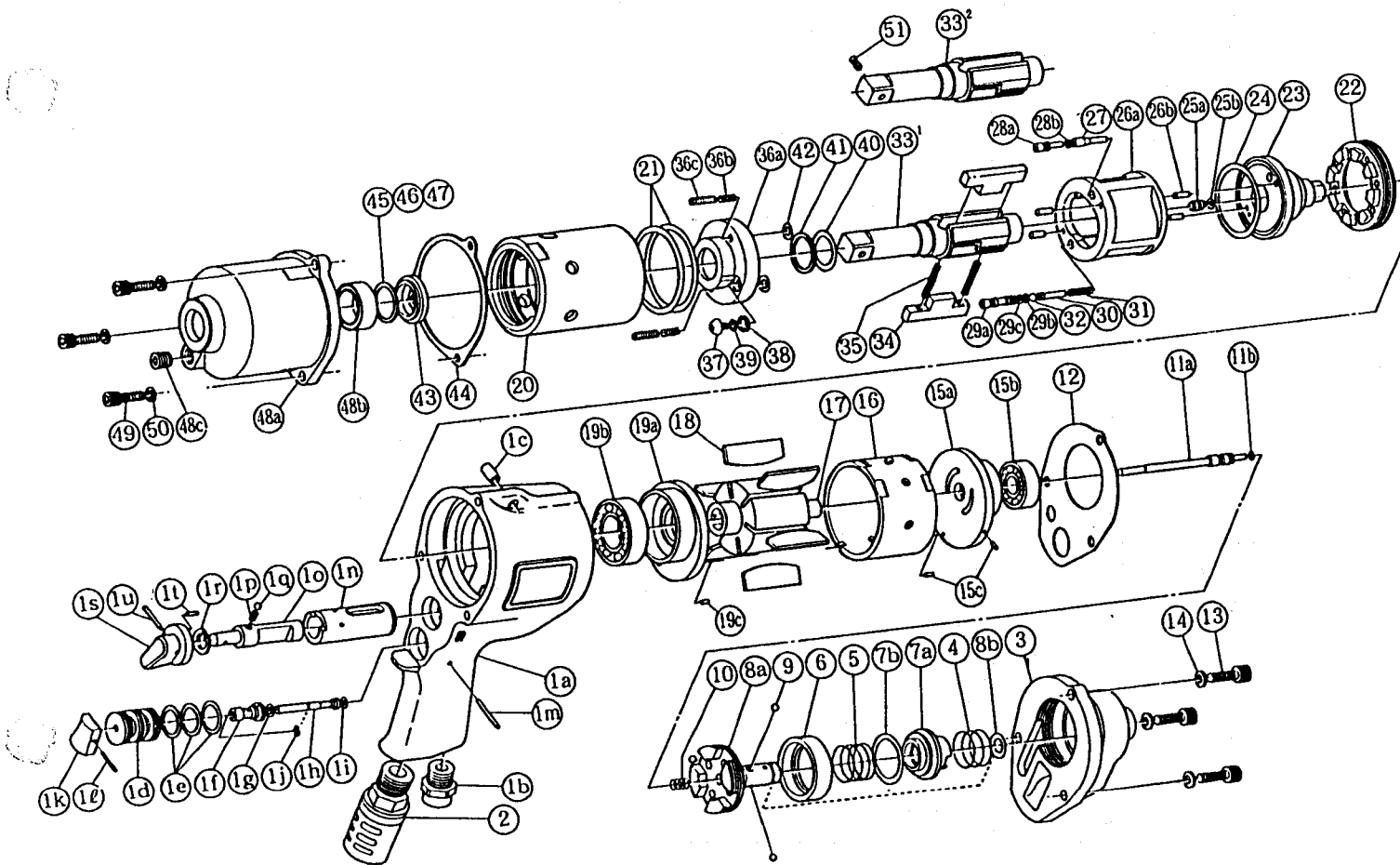
# YOKOTA

## SHUT - OFF 2 BLADE • IMPULSE WRENCHES

MODEL (YES. NO.)	TOOL NO.
YXS-1100(00)	0247 0000 00 00

■ EXPLODED VIEW

1E



1E



# YOKOTA EUROPA BV

DE RUYTERKADE 142, AMSTERDAM PHONE (020) 25 29 53 TELEXNR; 14022

# PARTS LIST

No.	Name of Parts	Per Set	Parts No.	No.	Name of Parts	Per Set	Parts No.
1	Motor Case Assy.	1set	0247 0011 00 99	20	Liner Case	1	0237 0422 00 00
	(a) Motor Case	1	0247 0011 00 00	21	"O" Ring (N45)	2	9010 4043 00 00
	(b) Hose Joint	1	0237 0113 00 00	22	Liner Cap	1	0213 0423 00 00
	(c) Spring Roll Pin (6 × 12)	1	9250 1083 00 00	23	Liner Upper Plate	1	0243 0424 00 00
	Throttle Bushing Assy.	1set	0245 0104 00 99	24	"O" Ring (N39)	1	9010 4031 00 00
	(d) Throttle Bushing	1	* ↑	25	Sensor Assy.	1set	0245 0794 00 99
	(e) "O" Ring (N15)	3	9010 4008 00 00	(a) Sensor	1	* ↑	
	Throttle Rod Bushing Assy.	1set	0117 0105 00 99	(b) "O" Ring (P3)	1	9010 1001 00 00	
	(f) Throttle Rod Bushing	1	* ↑	26	Liner Assy.	1set	0243 0425 00 99
	(g) "O" Ring (No.3)	1	9010 3003 00 00	(a) Liner	1	* ↑	
	Throttle Rod Assy.	1set	2058 0106 00 99	(b) Pin (3 × 7)	4	8052 1019 00 00	
	(h) Throttle Rod	1	* ↑	27	Relief Valve	1	0237 0245 00 00
	(i) "O" Ring (N2)	1	9010 4001 00 00	28	Spring Guide(B) Assy.	1set	0243 0510 00 99
	(j) Snap Ring (ETW - 2.8)	1	9040 5008 00 00	(a) Spring Guide(B)	1	* ↑	
	(k) Throttle Knob	1	2024 0153 00 00	(b)"O" Ring (N3)	1	9010 4025 00 00	
	(l) Spring Roll Pin (1.5 × 14)	1	9250 1005 00 00	29	Check Valve Assy.	1set	0243 0251 00 99
	(m) Pin G (3 × 24)	1	8410 6024 00 00	(a) Check Valve	1	* ↑	
	(n) Reverse Bushing	1	0128 0004 00 00	(b)"O" Ring (N3)	1	9010 4025 00 00	
	(o) Reverse Valve	1	0128 0005 00 00	(c)"O" Ring (N2)	1	9010 4001 00 00	
	(p) Spring (3 × 10)	1	8020 1004 00 00	30	Spring Guide	1	0243 0510 00 00
(q) Ball (1/8)	1	9150 3009 00 00	31	Spring (4 × 20)	1	8020 1263 00 00	
(r) Snap Ring (IRTW - 12)	1	9040 3002 00 00	32	Ball (M4)	1	9150 1005 00 00	
Reverse Lever Assy.	1	0245 0007 00 99	33	Main Shaft (1/2sq)	1	0243 0614 00 12	
(s) Reverse Lever	1	* ↑	51	Plunger Assy.	1set	0237 0149 00 99	
(t) Spring Roll Pin(3×4.5)	1	9250 2004 00 00	34	Blade	2	0241 0719 00 00	
(u) Spring Roll Pin(3×14)	1	9250 1049 00 00	35	Spring (4 × 32)	2	8020 1251 00 00	
2	Silencer Assy.	1set	3048 0053 02 99	36	Liner Lower Plate(A) Assy.	1set	0243 0426 00 98
3	Motor Case Cover	1	0243 0001 00 00	(a) Liner Lower Plate	1	0243 0426 00 00	
4	Spring (20.5 × 12)	1	8020 1262 00 00	(b) Helisert (M4)	2	9050 2002 00 00	
5	Spring (20.5 × 15)	1	8020 1261 00 00	(c) Screw (M4 × 14)	2	9480 2022 00 00	
6	Control Plate	1	0243 0226 00 00	37	Oil Plug (M4)	1	0048 0010 00 00
7	Control Valve Assy.	1set	0245 0241 00 99	38	Washer (6.5 × 8.5 × 1.1)	1	8040 1073 00 00
	(a) Control Valve	1	* ↑	39	"O" Ring (N4)	1	9010 4021 00 00
	(b) "O" Ring (P22)	1	9010 1019 00 00	40	"O" Ring (2.55 × 17.8 × 22.9)	1	9010 6017 00 00
8	Control Bushing Assy.	1set	0243 0236 00 99	41	Backup Ring (18 × 22.4 × 0.8)	1	9090 1006 00 00
	(a) Control Bushing	1	* ↑	42	"O" Ring (N6)	2	9010 4026 00 00
	(b) "O" Ring (N10)	1	9010 4004 00 00	43	Spacer	1	0243 0119 00 00
9	Ball (M3.5)	3	9150 1004 00 00	44	S - Packing (B)	1	0213 0003 01 02
10	Spring (5.8 × 14)	1	8020 1268 00 00	45	ST - Packing (17.5 × 21.5 × 0.2)	1	8011 1062 00 00
11	Control Shaft Assy.	1set	0247 0224 00 99	46	ST - Packing (17.5 × 21.5 × 0.3)	1	8011 1063 00 00
	(a) Control Shaft	1	* ↑	47	ST - Packing (17.5 × 21.5 × 0.5)	1	8011 1064 00 00
	(b)"O" Ring (N3)	1	9010 4025 00 00	48	Hammer Case Assy.	1set	0243 0401 00 99
12	S - Packing (A)	1	0230 0003 00 01	(a) Hammer Case	1	0243 0401 00 00	
13	Hex. Socket Bolt (M5 × 18)	3	8070 3052 00 00	(b) Ball Bearing (# 6803ZZ)	1	9100 5027 00 00	
14	Spring Washer (M5)	3	9200 3005 00 00	(c) Socket Plug (PT1/8)	1	8210 2001 00 00	
15	Upper Plate Assy.	1set	0243 0303 00 99	49	Hex.Socket Bolt (M5 × 18)	3	8070 3052 00 00
	(a) Upper Plate	1	0243 0303 00 00	50	Spring Washer (M5)	3	9200 3005 00 00
	(b) Ball Bearing (# 6000)	1	9100 1015 00 00				
	(c) Spring Roll Pin (2 × 5)	2	9250 1010 00 00				
16	Cylinder	1	0241 0304 00 00	Standard Accessories			
17	Rotor	1	0247 0305 00 00		Hexagon Wrench (H2L)	1	9610 1013 00 00
18	Vane	6	0241 0306 00 00		Hexagon Wrench (H5)	1	9610 1006 00 00
19	Lower Plate Assy.	1set	0228 0307 00 99	Optional Parts			
	(a) Lower Plate	1	0228 0307 00 00	33	Main Shaft (1/2sq)	1	0243 0614 00 12
	(b) Ball Bearing (# 6003)	1	9100 1018 00 00				
	(c) Spring Roll Pin (2 × 5)	1	9250 1010 00 00				

The part marked "\*" can not be supplied individually. So please order it as a unit of assembly shown by arrow mark (↑).