

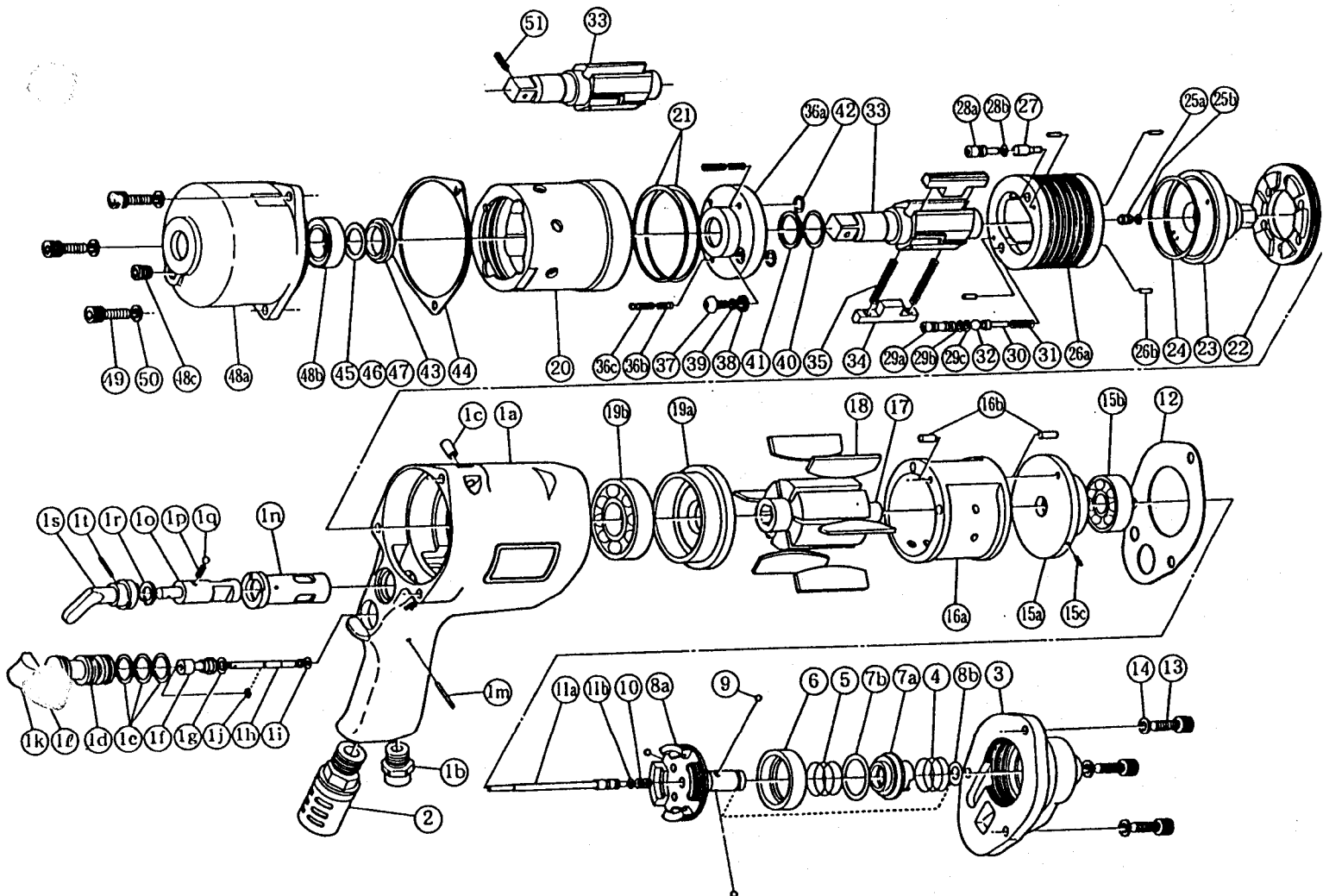
# YOKOTA

## SHUT - OFF 2 BLADE • IMPULSE WRENCHES

MODEL (YES. NO.)	TOOL NO.
YXS-1900 (00)	0248 0000 00 00

■ EXPLODED VIEW

(H)



(H)



# YOKOTA EUROPA BV

DE RUYTERKADE 142, AMSTERDAM PHONE (020) 25 29 53 TELEXNR; 14022

# PARTS LIST

No.	Name of Parts	Per Set	Parts No.
1	Motor Case Assy.	1set	0248 0011 00 99
	(a) Motor Case	1	0248 0011 00 00
	(b) Hose Joint	1	0237 0113 00 00
	(c) Spring Roll Pin (6 × 12)	1	9250 1083 00 00
	Throttle Bushing Assy.	1set	0248 0104 00 99
	(d) Throttle Bushing	1	* ↑
	(e) "O" Ring (N15)	3	9010 4008 00 00
	Throttle Rod Bushing Assy.	1set	0229 0105 00 99
	(f) Throttle Rod Bushing	1	* ↑
	(g) "O" Ring (No.5)	1	9010 3004 00 00
	Throttle Rod Assy.	1set	0229 0106 00 99
	(h) Throttle Rod	1	* ↑
	(i) "O" Ring (N2)	1	9010 4001 00 00
	(j) Snap Ring (ETW - 2.8)	1	9040 5008 00 00
	(k) Throttle Knob	1	2024 0153 00 00
	(l) Spring Roll Pin (1.5 × 14)	1	9250 1005 00 00
	(m) Pin G (3 × 24)	1	8410 6024 00 00
	(n) Reverse Bushing	1	0235 0004 00 00
	(o) Reverse Valve	1	0235 0005 00 00
	(p) Spring (4 × 6)	1	8020 1022 00 00
(q) Ball (M4)	1	9150 1005 00 00	
(r) Snap Ring (IRTW - 14)	1	9040 3004 00 00	
(s) Reverse Lever	1	0048 0007 01 00	
(t) Spring Roll Pin (3 × 14)	1	9250 1049 00 00	
2	Silencer Assy.	1set	3048 0053 02 99
3	Motor Case Cover	1	0248 0001 00 00
4	Spring (20.5 × 12)	1	8020 1262 00 00
5	Spring (20.5 × 15)	1	8020 1261 00 00
6	Control Plate	1	0243 0226 00 00
7	Control Valve Assy.	1set	0245 0241 00 99
	(a) Control Valve	1	* ↑
	(b) "O" Ring (P22)	1	9010 1019 00 00
8	Control Bushing Assy.	1set	0248 0236 00 99
	(a) Control Bushing	1	* ↑
	(b) "O" Ring (N10)	1	9010 4004 00 00
9	Ball (M3.5)	3	9150 1004 00 00
10	Spring (5.8 × 14)	1	8020 1268 00 00
11	Control Shaft Assy.	1set	0248 0224 00 99
	(a) Control Shaft	1	* ↑
	(b) "O" Ring (N3)	1	9010 4025 00 00
12	S - Packing (A)	1	0235 0003 00 01
13	Hex. Socket Bolt (M6 × 20)	3	8070 3034 00 00
14	Spring Washer (M6)	3	9200 3006 00 00
15	Upper Plate Assy.	1set	0248 0303 01 99
	(a) Upper Plate	1	0248 0303 01 00
	(b) Ball Bearing (# 6201)	1	9100 1021 00 00
	(c) Spring Roll Pin (3 × 6)	1	9250 1043 00 00
16	Cylinder Assy.	1set	0229 0304 01 99
	(a) Cylinder	1	* ↑
	(b) Spring Roll Pin (4 × 10)	2	9250 1066 00 00
17	Rotor	1	0248 0305 00 00
18	Vane	6	0229 0306 00 00
19	Lower Plate Assy.	1set	0229 0307 01 99
	(a) Lower Plate	1	0229 0307 01 00
	(b) Ball Bearing (# 6204)	1	9100 1024 00 00

No.	Name of Parts	Per Set	Parts No.
20	Liner Case	1	0406 0422 00 00
21	"O" Ring (N55)	2	9010 4036 00 00
22	Liner Cap	1	0248 0423 00 00
23	Liner Upper Plate	1	0248 0424 00 00
24	"O" Ring (N48)	1	9010 4035 00 00
25	Sensor Assy.	1set	0245 0794 00 99
	(a) Sensor	1	* ↑
	(b) "O" Ring (P3)	1	9010 1001 00 00
26	Liner Assy.	1set	0248 0425 00 99
	(a) Liner	1	* ↑
	(b) Pin (3.5 × 7)	4	8052 1034 00 00
27	Relief Valve	1	0320 0245 00 00
28	Spring Guide(B) Assy.	1set	0248 0510 00 99
	(a) Spring Guide(B)	1	* ↑
	(b) "O" Ring (P3)	1	9010 1001 00 00
29	Check Valve Assy.	1set	0248 0251 00 99
	(a) Check Valve	1	* ↑
	(b) "O" Ring (P3)	1	9010 1001 00 00
	(c) "O" Ring (N3)	1	9010 4025 00 00
30	Spring Guide	1	0248 0510 00 00
31	Spring (4.6 × 27)	1	8020 1266 00 00
32	Ball (M6)	1	9150 1008 00 00
33	Main Shaft (1/2sq)	1	0248 0614 00 12
51	Plunger Assy.	1set	0237 0149 00 99
34	Blade	2	0320 0719 01 00
35	Spring (4.6 × 41)	2	8020 1215 00 00
36	Liner Lower Plate(A) Assy.	1set	0248 0426 00 98
	(a) Liner Lower Plate	1	0248 0426 00 00
	(b) Helisert (M4)	2	9050 2002 00 00
	(c) Screw (M4 × 14)	2	9480 2022 00 00
37	Hex. Socket Bolt (M5 × 8)	1	8071 1011 00 00
38	Washer (7.5 × 9.5 × 1.2)	1	8040 1127 00 00
39	"O" Ring (N5)	1	9010 4033 00 00
40	"O" Ring (2.55 × 17.8 × 22.9)	1	9010 6017 00 00
41	Backup Ring (18 × 22.4 × 0.8)	1	9090 1006 00 00
42	"O" Ring (N7)	2	9010 4002 00 00
43	Spacer	1	0243 0119 00 00
44	S - Packing (B)	1	0229 0003 00 02
45	ST - Packing (17.5 × 21.5 × 0.2)	1	8011 1062 00 00
46	ST - Packing (17.5 × 21.5 × 0.3)	1	8011 1063 00 00
47	ST - Packing (17.5 × 21.5 × 0.5)	1	8011 1064 00 00
48	Hammer Case Assy.	1set	0248 0401 00 99
	(a) Hammer Case	1	0248 0401 00 00
	(b) Ball Bearing (# 6903ZZ)	1	9100 5025 00 00
	(c) Socket Plug (PT1/8)	1	8210 2001 00 00
49	Hex.Socket Bolt (M6 × 18)	3	8070 3033 00 00
50	Spring Washer (M6)	3	9200 3006 00 00
Standard Accessories			
	Hexagon Wrench (H2L)	1	9610 1013 00 00
	Hexagon Wrench (H5)	1	9610 1006 00 00
Optional Parts			
33	Main Shaft (1/2sq)	1	0248 0614 00 12

The part marked "\*" can not be supplied individually. So please order it as a unit of assembly shown by arrow mark (↑).