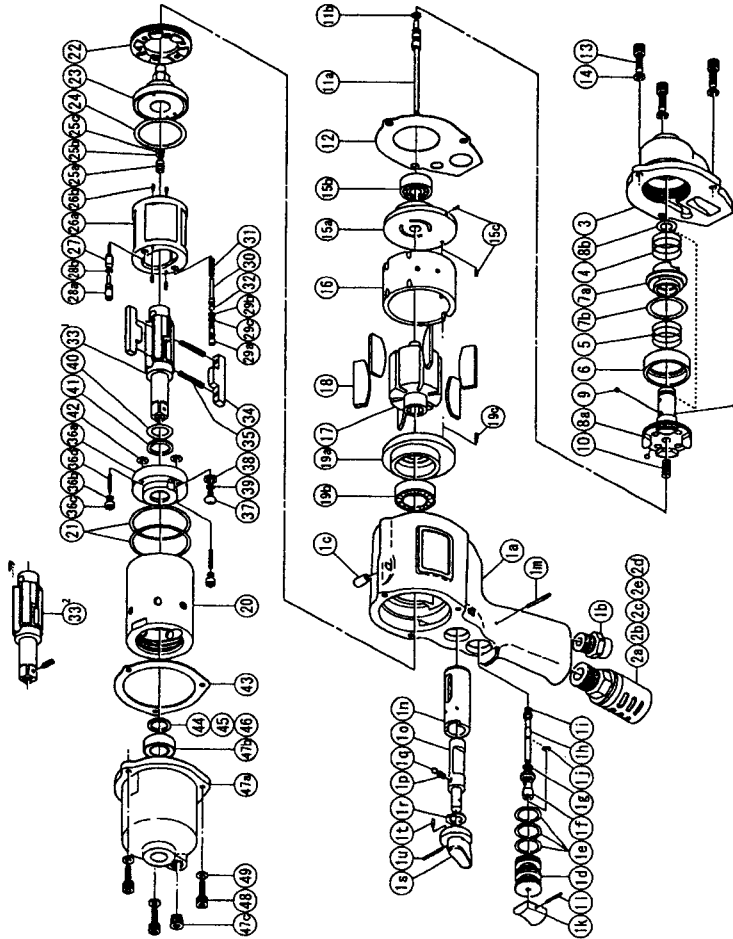


**IMPULSE WRENCH**

| MODELS (YES/NO) | TOOL No.        |
|-----------------|-----------------|
| YXS-700 (01)    | 0246 0000 01 00 |
| YXS-700E (01)   | 0246 0000 01 04 |



The part "※" can not be supplied individually  
So please order it as a unit of assembly  
shown by arrow mark (↑).

★ marked parts; use one of them.

**PARTS LIST**

| No. | Name of Parts              | Per set | Parts No.      | No. | Name of Parts                  | Per set | Parts No.      |
|-----|----------------------------|---------|----------------|-----|--------------------------------|---------|----------------|
| 1   | Motor Case Assy.           | 1 set   | 0246 0011 0099 | 20  | Liner Case                     | 1       | 0129 0422 0000 |
|     | a) Motor Case              | 1       | ※ ↑            | 21  | O-Ring N38                     | 2       | 9010 4016 0000 |
|     | b) Hose Joint              | 1       | 0237 0113 0000 | 22  | Liner Cap                      | 1       | 0048 0423 0000 |
|     | c) S.R.Pin 6X12            | 1       | 9250 1083 0000 | 23  | Liner Upper Plate              | 1       | 0245 0424 0000 |
|     | Throttle Bushing Assy.     | 1 set   | 0245 0104 0099 | 24  | O-Ring N32                     | 1       | 9010 4014 0000 |
|     | d) Throttle Bushing        | 1       | ※ ↑            | 25  | Sensor Assy.                   | 1 set   | 0245 0794 0099 |
|     | e) O-Ring N15              | 3       | 9010 4008 0000 |     | a) Sensor                      | 1       | ※ ↑            |
|     | Throttle Rod Bushing Assy. | 1 set   | 0078 0105 0099 |     | b) O-Ring P3                   | 1       | 9010 1001 0000 |
|     | f) Throttle Rod Bushing    | 1       | ※ ↑            |     | c) Back-Up Ring 3.15X5.95X1.25 | 1       | 9090 2003 0000 |
|     | g) O-Ring No.3 (Hs90)      | 1       | 9010 3021 0000 | 26  | Liner Assy.                    | 1 set   | 0246 0425 0199 |
|     | Throttle Rod Assy.         | 1 set   | 2058 0106 0199 |     | a) Liner                       | 1       | ※ ↑            |
|     | h) Throttle Rod            | 1       | ※ ↑            |     | b) Pin 3X5 <41-44HRC>          | 4       | 8052 1031 0000 |
|     | i) O-Ring N2               | 1       | 9010 4001 0000 | 27  | Relief Valve                   | 1       | 0129 0245 0000 |
|     | j) Snap Ring ETW-2.8       | 1       | 9040 5008 0000 | 28  | Spring Guide (B) Assy.         | 1 set   | 0246 0510 0099 |
|     | k) Throttle Knob           | 1       | 2024 0153 0000 |     | a) Spring Guide B              | 1       | ※ ↑            |
|     | l) S.R.Pin 1.5X14          | 1       | 9250 1005 0000 | 29  | O-Ring N2                      | 1 set   | 9010 4001 0000 |
|     | m) Slotted Pin G 3X24      | 1       | 8410 6024 0000 |     | Check Valve Assy.              | 1 set   | 0245 0251 0099 |
|     | n) Reverse Bushing         | 1       | 0128 0004 0000 |     | a) Check Valve                 | 1       | ※ ↑            |
|     | o) Reverse Valve           | 1       | 0128 0005 0000 |     | b) O-Ring N2                   | 1       | 9010 4001 0000 |
|     | p) Spring 3X9              | 1       | 8020 1216 0000 | 30  | O-Ring 0.7X2X3.4               | 1       | 9010 6020 0000 |
|     | q) Ball 1/8 S              | 1       | 9150 3009 0000 | 31  | Spring Guide                   | 1       | 0246 0510 0000 |
|     | r) Snap Ring IRTW-12       | 1       | 9040 3002 0000 | 32  | Spring 3.6X22.5                | 1       | 8020 1264 0000 |
|     | Reverse Lever Assy.        | 1 set   | 0245 0007 0099 | 33  | Ball M3.5 S                    | 1       | 9150 1004 0000 |
|     | s) Reverse Lever           | 1       | ※ ↑            |     | Main Shaft 3/8                 | 1       | 0246 0614 0101 |
|     | t) S.R.Pin 3X4             | 1       | 9250 1041 0000 | 34  | Blade                          | 2       | 0129 0719 0300 |
| 2   | u) S.R.Pin 3X14            | 1       | 9250 1049 0000 | 35  | Spring 3.5X25                  | 2       | 8020 1306 0000 |
|     | Silencer Assy. PF3/8       | 1 set   | 0405 0053 0199 | 36  | Liner Lower Plate (A) Assy.    | 1 set   | 0245 0426 0198 |
|     | a) Silencer Body PF3/8     | 1       | ※ ↑            |     | Liner Lower Plate              | 1       | ※ ↑            |
|     | b) Silencer Cover          | 1       | 3048 0081 0200 |     | Nylon Bushing M3               | 2       | 0260 0431 0000 |
|     | c) Silencer Sheet          | 1       | 0405 0032 0000 |     | Bushing                        | 2       | 0260 0728 0000 |
|     | d) Joint Ring              | 1       | 1105 0116 0000 |     | Screw M3X12.5                  | 2       | 9480 2026 0000 |
| 3   | e) O-Ring N20              | 1       | 9010 4010 0000 | 37  | Oil Plug M4                    | 1       | 0048 0010 0000 |
| 4   | Motor Case Cover           | 1       | 0246 0001 0000 | 38  | Washer 6.5X8.5X1.1             | 1       | 8040 1073 0000 |
| 5   | Spring 20.5X12             | 1       | 8020 1262 0000 | 39  | O-Ring N4                      | 1       | 9010 4021 0000 |
| 6   | Spring 20.5X15             | 1       | 8020 1261 0000 | 40  | O-Ring 2.8X12.8X18.4 Hs70      | 1       | 9010 6014 0000 |
| 7   | Control Plate              | 1       | 0245 0226 0000 | 41  | Back-Up Ring 13X18X0.6         | 1       | 9090 1005 0000 |
|     | Control Valve Assy.        | 1 set   | 0245 0241 0099 | 42  | O-Ring N5                      | 2       | 9010 4033 0000 |
|     | a) Control Valve           | 1       | ※ ↑            | 43  | S-Packing B                    | 1       | 0122 0003 0002 |
| 8   | b) O-Ring P22              | 1       | 9010 1019 0000 | 44  | ★ St-Packing 12.5X16.5X0.2     | 1       | 8011 1059 0000 |
|     | Control Bushing Assy.      | 1 set   | 0245 0236 0199 | 45  | ★ St-Packing 12.5X16.5X0.3     | 1       | 8011 1060 0000 |
|     | a) Control Bushing         | 1       | ※ ↑            | 46  | ★ St-Packing 12.5X16.5X0.5     | 1       | 8011 1061 0000 |
| 9   | b) O-Ring N10              | 1       | 9010 4004 0000 | 47  | Hammer Case Assy.              | 1 set   | 0246 0401 0099 |
| 10  | Ball M3.5 S                | 3       | 9150 1004 0000 |     | a) Hammer Case                 | 1       | 0246 0401 0000 |
| 11  | Spring 5.8X14              | 1 set   | 8020 1268 0000 |     | b) Ball Bearing 6801ZZ         | 1       | 9100 5028 0000 |
|     | Control Shaft Assy.        | 1 set   | 0246 0224 0099 |     | c) Socket Plug Ptl/8           | 1       | 8210 5001 0000 |
|     | a) Control Shaft           | 1       | ※ ↑            | 48  | Hex. Bolt M4X14 P=0.7          | 3       | 8070 3008 0000 |
| 12  | b) O-Ring N3               | 1       | 9010 4025 0000 | 49  | Spring Washer M4               | 3       | 9200 3004 0000 |
| 13  | S-Packing A                | 1       | 0128 0003 0001 |     | Standard Accessories           |         |                |
| 14  | Hex. Bolt M5X18 P=0.8      | 3       | 8070 3052 0000 |     | Universal Air Joint 1/4        | 1       | 9690 0015 0000 |
| 15  | Spring Washer M5           | 3       | 9200 3005 0000 |     | Hexagon Wrench H1.5X65X65      | 1       | 9610 1012 0000 |
|     | Upper Plate Assy.          | 1 set   | 0246 0303 0199 |     | Hexagon Wrench H5              | 1       | 9610 1006 0000 |
|     | a) Upper Plate             | 1       | 0246 0303 0100 |     | Parts for YXS-700E <01>        |         |                |
|     | b) Ball Bearing 608        | 1       | 9100 1004 0000 | 33  | ★ Main Shaft 3/8 Assy.         | 1 set   | 0246 0614 0159 |
| 16  | c) S.R.Pin 2X5             | 2       | 9250 6001 0000 |     |                                |         |                |
| 17  | Cylinder                   | 1       | 0122 0304 0000 |     |                                |         |                |
| 18  | Rotor                      | 1       | 0248 0305 0000 |     |                                |         |                |
| 19  | Vane                       | 6       | 0122 0306 0000 |     |                                |         |                |
|     | Lower Plate Assy.          | 1 set   | 0945 0307 0099 |     |                                |         |                |
|     | a) Lower Plate             | 1       | 0945 0307 0000 |     |                                |         |                |
|     | b) Ball Bearing 6902       | 1       | 9100 1036 0000 |     |                                |         |                |
|     | c) S.R.Pin 2X5             | 1       | 9250 6001 0000 |     |                                |         |                |



**YOKOTA EUROPE BV**  
 e-mail info@impulsetools.com http://www.impulsetools.com  
 P.O. BOX 382 NL-1000 AJ AMSTERDAM PHONE: 020-625 29 53 FAX: 020-625 35 69  
 Hydraulic Impulse Wrenches, Impact Wrenches, Drills, Grinders, Screw Drivers, Chippers, Scales, Pumps.