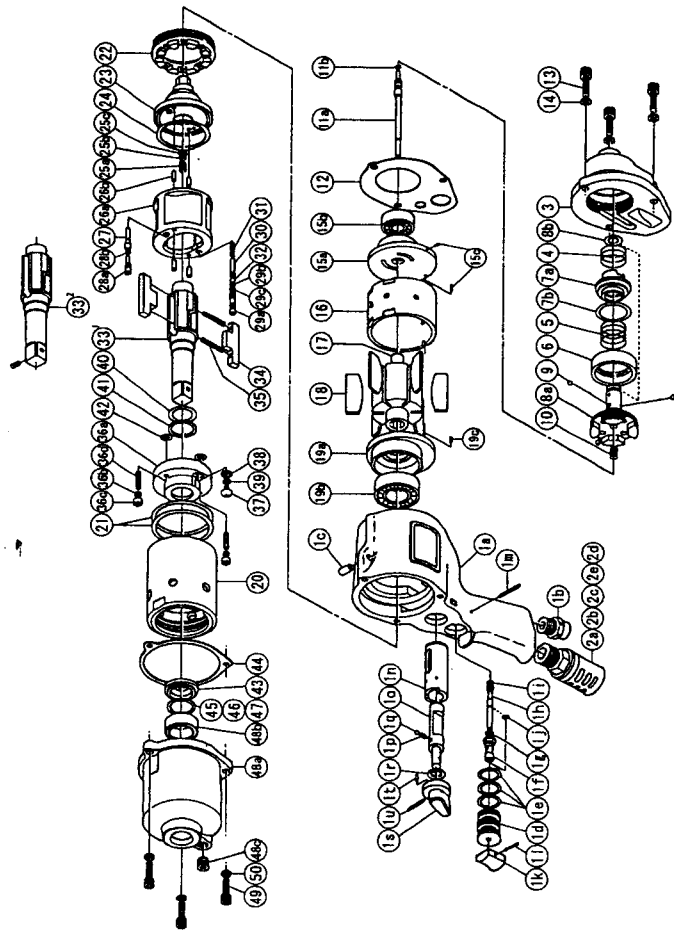




**IMPULSE WRENCH**

MODELS (YES/No)	TOOL No.
YXS-900 (02)	0243 0000 02 00
YXS-900E (02)	0243 0000 02 04



The part "\*" can not be supplied individually.  
So please order it as a unit of assembly shown by arrow mark (↑).

★ marked parts; use one of them.

**PARTS LIST**

No.	Name of Parts	Per set	Parts No.	No.	Name of Parts	Per set	Parts No.
1	Motor Case Assy.	1 set	0243 0011 0099	20	Liner Case	1	0237 0422 0000
	a) Motor Case	1	*	21	O-Ring N45	2	9010 4043 0000
	b) Hose Joint	1	0237 0113 0000	22	Liner Cap	1	0213 0423 0000
	c) S.R.Pin 6X12	1	9250 1083 0000	23	Liner Upper Plate	1	0243 0424 0000
	d) Throttle Bushing Assy.	1 set	0245 0104 0099	24	O-Ring N39	1	9010 4031 0000
	e) O-Ring N15	3	9010 4008 0000	25	Sensor Assy.	1 set	0245 0794 0099
	f) Throttle Rod Bushing Assy.	1 set	0078 0105 0099		a) Sensor	1	*
	g) Throttle Rod Bushing	1	*		b) O-Ring P3	1	9010 1001 0000
	h) Throttle Rod No.3 (Hs90)	1	9010 3021 0000		c) Back-Up Ring 3.15X5.95X1.25	1 set	9090 2003 0000
	i) Throttle Rod Assy.	1 set	2058 0106 0199	26	Liner Assy.	1 set	0243 0425 0199
	j) Throttle Rod	1	*		a) Liner	1	*
	k) O-Ring N2	1	9010 4001 0000		b) Pin 3X7 <41-44HRC>	4	8052 1032 0000
	l) Snap Ring ETW-2.8	1	9040 5008 0000	27	Relief Valve	1	0237 0245 0000
	m) Throttle Knob	1	2024 0153 0000	28	Spring Guide (B) Assy.	1 set	0243 0510 0099
	n) S.R.Pin 1.5X14	1	9250 1005 0000		a) Spring Guide B	1	*
	o) Slotted Pin G 3X24	1	8410 8024 0000	29	Check Valve Assy.	1	9010 4025 0000
	p) Reverse Bushing	1	0128 0004 0000		a) Check Valve	1 set	0243 0251 0099
	q) Reverse Valve	1	0128 0005 0000		b) O-Ring N3	1	9010 4025 0000
	r) Spring 3X9	1	8020 1216 0000	30	O-Ring N2	1	9010 4001 0000
	s) Ball 1/8 S	1	9150 3009 0000	31	Spring Guide	1	0243 0510 0000
	t) Snap Ring IRTW-12	1 set	9040 3002 0000	32	Spring 4X20	1	8020 1263 0000
	u) Reverse Lever Assy.	1 set	0245 0007 0099	33	Ball M4 S	1	9150 1005 0000
	v) Reverse Lever	1	*	34	Main Shaft 1/2	1	0243 0614 0201
	w) S.R.Pin 3X4	1	9250 1041 0000	35	Blade	2	0241 0719 0000
	x) S.R.Pin 3X14	1	9250 1049 0000		Double Spring		
2	Silencer Assy. PF3/8	1 set	0405 0053 0199		Spring 4X35	2	8020 1342 0000
	a) Silencer Body PF3/8	1	*		Spring 2.7X35	2	8020 1343 0000
	b) Silencer Cover	1	3048 0081 0200	36	Liner Lower Plate (A) Assy.	1 set	0243 0426 0198
	c) Silencer Sheet	1	0405 0032 0000		a) Liner Lower Plate	1	*
	d) Joint Ring	1	1105 0116 0000		b) Nylon Bushing M4	2	0261 0431 0000
	e) O-Ring N20	1	9010 4010 0000		c) Bushing	2	0261 0728 0000
3	Motor Case Cover	1	0243 0001 0000	37	Oil Plug M4	2	9480 2022 0000
4	Spring 20.5X12	1	8020 1262 0000		d) Screw M4X14	2	0048 0010 0000
5	Spring 20.5X15	1	8020 1261 0000	38	Washer 6.5X8.5X1.1	1	8040 1073 0000
6	Control Plate	1	0243 0226 0000	39	O-Ring N4	1	9010 4021 0000
7	Control Valve Assy.	1 set	0245 0241 0099	40	O-Ring 2.55X17.8X22.9 (Hs70)	1	9010 6017 0000
	a) Control Valve	1	*	41	Back-Up Ring 1.8X22.4X0.8	1	9090 1006 0000
	b) O-Ring P22	1	9010 1019 0000	42	O-Ring N6	2	9010 4026 0000
8	Control Bushing Assy.	1 set	0243 0238 0199	43	Spacer	1	0243 0119 0000
	a) Control Bushing	1	*	44	S-Packing B	1	0213 0003 0102
9	Ball M3.5 S	3	9010 4004 0000	45	St-Packing 17.5X21.5X0.2	1	8011 1062 0000
10	Spring 5.8X14	1	9150 1004 0000	46	St-Packing 17.5X21.5X0.3	1	8011 1063 0000
11	Control Shaft Assy.	1 set	0243 0224 0099	47	St-Packing 17.5X21.5X0.5	1	8011 1064 0000
	a) Control Shaft	1	*	48	Hammer Case Assy.	1 set	0243 0401 0099
	b) O-Ring N3	1	9010 4025 0000		a) Hammer Case	1	0243 0401 0000
12	S-Packing A	1	0230 0003 0001		b) Ball Bearing 6803ZZ	1	9100 5027 0000
13	Hex. Bolt M5X18 P=0.8	3	8070 3052 0000	49	Socket Plug Pt1/8	1	8210 5001 0000
14	Spring Washer M5	3	9200 3005 0000		Hex. Bolt M5X18 P=0.8	3	8070 3052 0000
15	Upper Plate Assy.	1 set	0243 0303 0199	50	Spring Washer M5	3	9200 3005 0000
	a) Upper Plate	1	0243 0303 0100		Standard Accessories		
	b) Ball Bearing 6000	2	9100 1015 0000		Touch Joint 1/4-02	1	9690 0002 0000
16	Cylinder	1	9250 6001 0000		Hexagon Wrench H2X65X65	1	9610 1013 0000
17	Rotor	1	0213 0304 0000		Hexagon Wrench H5	1	9610 1006 0000
18	Vane	6	0243 0305 0000		Parts for YXS-900E <02>		
19	Lower Plate Assy.	1 set	0947 0307 0099	33	Main Shaft 1/2 Assy.	1	0243 0614 0259
	a) Lower Plate	1	0947 0307 0000				
	b) Ball Bearing 6003	1	9100 1018 0000				
	c) S.R.Pin 2X5	1	9250 6001 0000				

**YOKOTA EUROPE BV**  
 e-mail info@impulsetools.com http://www.impulsetools.com  
 P.O. BOX 382 NL-1000 AJ AMSTERDAM PHONE: 020-625 29 53 FAX: 020-625 35 89  
 Hydraulic Impulse Wrenches, Impact Wrenches, Drills, Grinders, Screw Drivers, Chippers, Saws, Pumps.