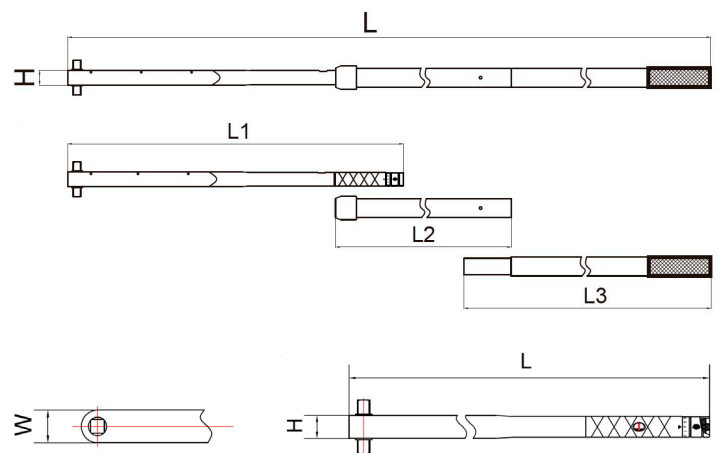
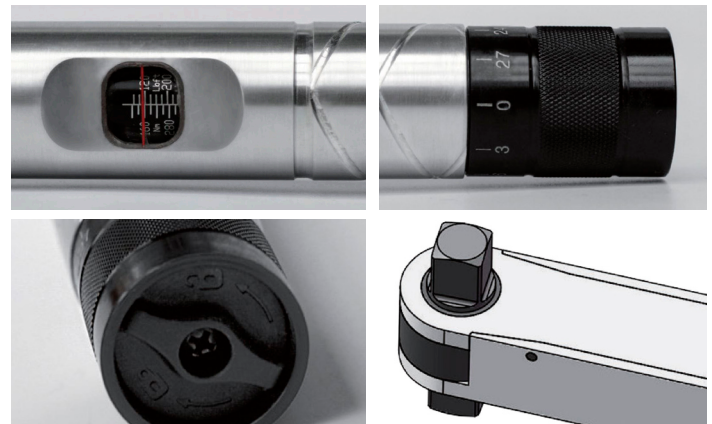


ALUMINIUM TORQUE WRENCH AU-SERIES

100 ~ 2000 Nm

This torque wrench from NovaTork is made of high-quality aluminum and has a built-in ratchet head. This makes it very lightweight and durable, but above all very pleasant to use. Repositioning or a loose ratchet head is no longer necessary.

The solid construction makes it very suitable for higher tightening torques. The AUMR series has an option for an extended handle for ergonomic and safe working.



FEATURES

- Accuracy: +/- 4% at 20% to 100% of capacity
- Clearly readable scale
- Scale division in Nm or Lbft
- Lightweight
- Blocking device prevents inadvertent shifting of the set torque
- Clearly readable decimated scale
- Built-in ratchet head for counterclockwise and clockwise use.

AU Model

Type	Square Drive	Torque Nm	Weight kg	L1 mm	L2 mm	L3 mm	Width (W) x height (H) mm	Length (L) mm
AUMR4550	3/4"	100 ~ 550	2,9	-	-	-	45 x 35	811
AUMR4760	3/4"	160 ~ 760	3,2	-	-	-	45 x 35	811
AUMR41000	3/4"	200 ~ 1000	5,6	811	754	-	45 x 35	1400
AUMR51500	1"	300 ~ 1500	9,8	930	930	-	60 x 40	1598
AUMR52000	1"	400 ~ 2000	12	930	930	930	60 x 40	2308