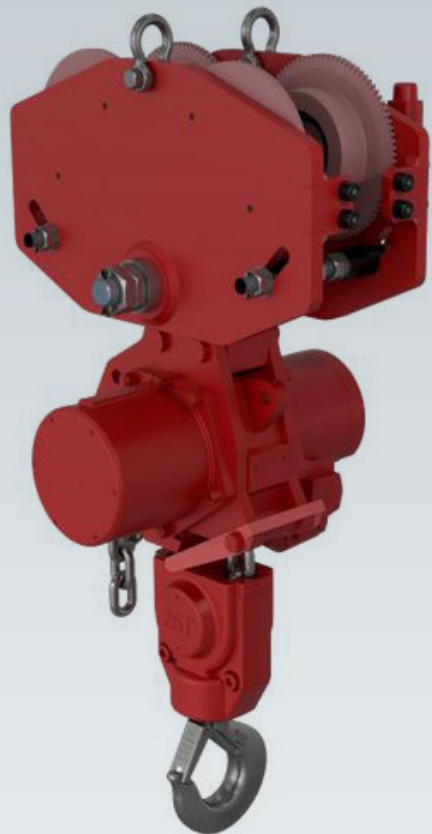
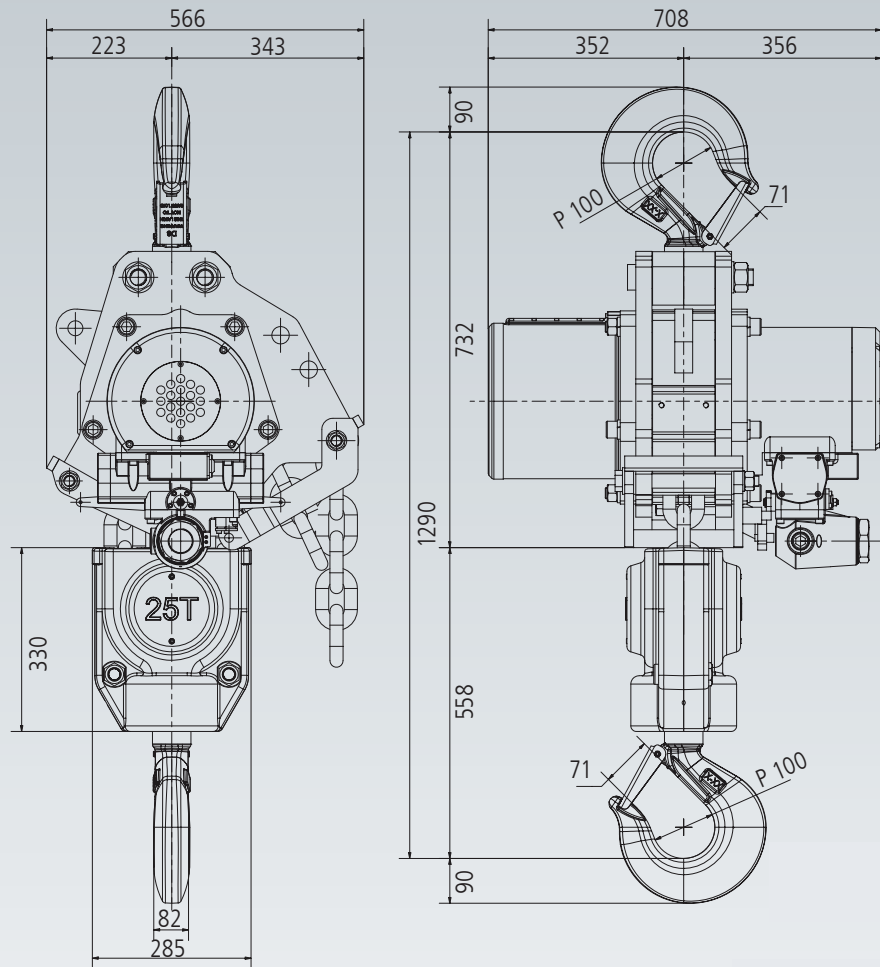


Hoist with trolley



Dimensions in mm



For the complete overview of our hoists



ask for our special hoist catalogue:
RED ROOSTER AIR CHAIN HOISTS



or visit our website:
WWW.RAMI-YOKOTA.COM

NEW: TMH-25 & TMH-30

Highest lifting speed in the world for this class!!!



FEATURES

- **Increase of lifting speed**

Lifting speed with rated load
 TMH-25: **1,4 m/min**
 TMH-30: **1,0 m/min**
 (TNC-25TW: 0,5 m/min)

- **Improvement of durability**

- TMH-25: M3
- TMH-30: M2
- **Highly efficient 3 step planet gear**
- Reduced heat generation
- Extremely robust

- **Noise level reduction**

Noise level **82 dBA** and below
 (TCR model 88dBA)

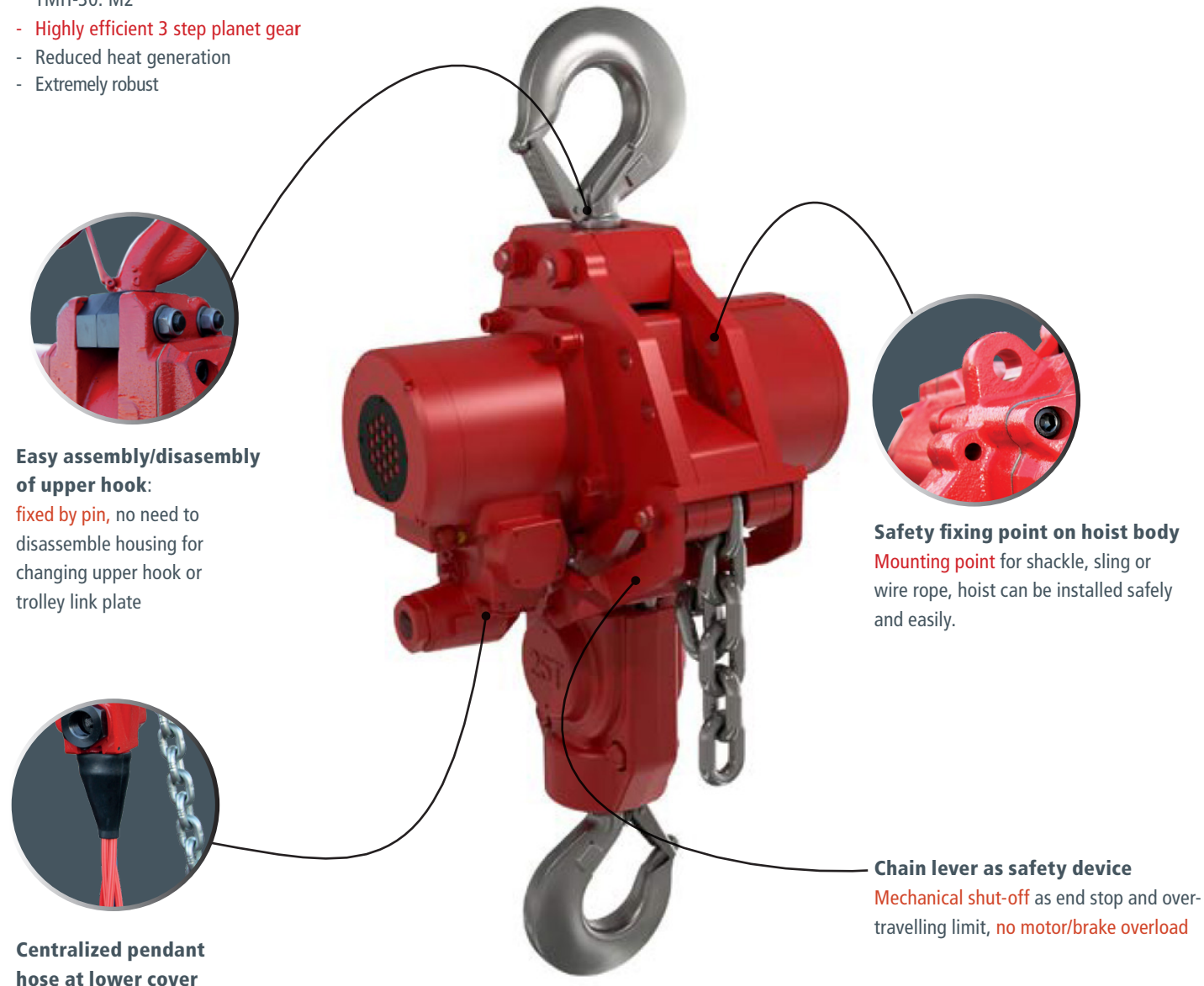
- **Main valve with O-ring**

Strong resistance against foreign materials

- **Robust mounting point for chain slack end and chain container M16 bolt**

- **Lowest headroom clearance**

Both: only 1290 mm!





TMH-25 & TMH-30

Highest lifting speed in the world for this class!!!

The NEW RED ROOSTER TMH series air chain hoists has the highest lifting speed with the lowest headroom on the hoist market. This hoist will guarantee the continuity of your process. The TMH hoists are designed with a full load supporting eye for installation and securing the hoist (during lifting operation) for extra safety.

Standard features:

- Optimum control of the load, very precise positioning
- Main air shut off valve
- Mechanical end stop system
- Load limiter built-in without loss of headroom
- Low noise level (80 dBA)
- Working air pressure 0,4 - 0,63 MPa (4-6,3 bar)
- Piped away exhaust air
- Extremely robust
- Precise variable speed control (cord-  and  pendant control)

Optional features:

- Marine paint specification
- Paint systems from C2 - Industrial to C5 - Offshore specification (red finish as standard, other RAL colours available on request)
- ATEX certification:
 II 3 GD c IIA T4
 II 2 GD c IIB T4
 II 2 GD c IIC T4
- Radio control pendant for electro pneumatic controls
- Chain collectors (PVC, galvanised or stainless steel)
- Various types of hook or clevis available
- In house design for "specials"
- Festoon systems

Recommended:

SMC air treatment unit: AC60-F10DM-8-B

Model*	WLL	Lifting speed with load	Lifting speed without load	Lowering speed with load
TMH-25C TMH-25PE	25.000 kg	1,4 m/min	2,7 m/min	3 m/min
TMH-30C TMH-30PE	30.000 kg	1,0 m/min	2,7 m/min	2,7 m/min

Model*	Air consumption lifting	Air consumption lowering	Air connection	Minimum hose diam
TMH-25C TMH-25PE	108 l/sec	180 l/sec	PT 1,5"	1,5"
TMH-30C TMH-30PE	108 l/sec	167 l/sec	PT 1,5"	1,5"

Model*	Working pressure	Weight with 3m hol	Additional metre hol	Chain falls
TMH-25C TMH-25PE	4 - 6 bar	581	24,4 kg	2 (23,5 x 66 mm)
TMH-30C TMH-30PE	4 - 6 bar	581	24,4 kg	2 (23,5 x 66 mm)

*C = Cord control / P = Pendant control